

IC Application Note No. S-225

Title: Sulfite besides standard anions in beer on the Metrosep A Supp 10 – 100

Summary: Determination of chloride, phosphate, sulfite, bromide, nitrate and sulfate in a beer applying anion chromatography with conductivity detection after chemical suppression.

Sample: Beer

Sample Preparation: Dilution 1 : 10 with a solution containing 100 µL/L formaldehyde (35%) and 200 µL/L sodium hydroxide (1 mol/L)

Column: 6.1020.010 Metrosep A Supp 10 – 100

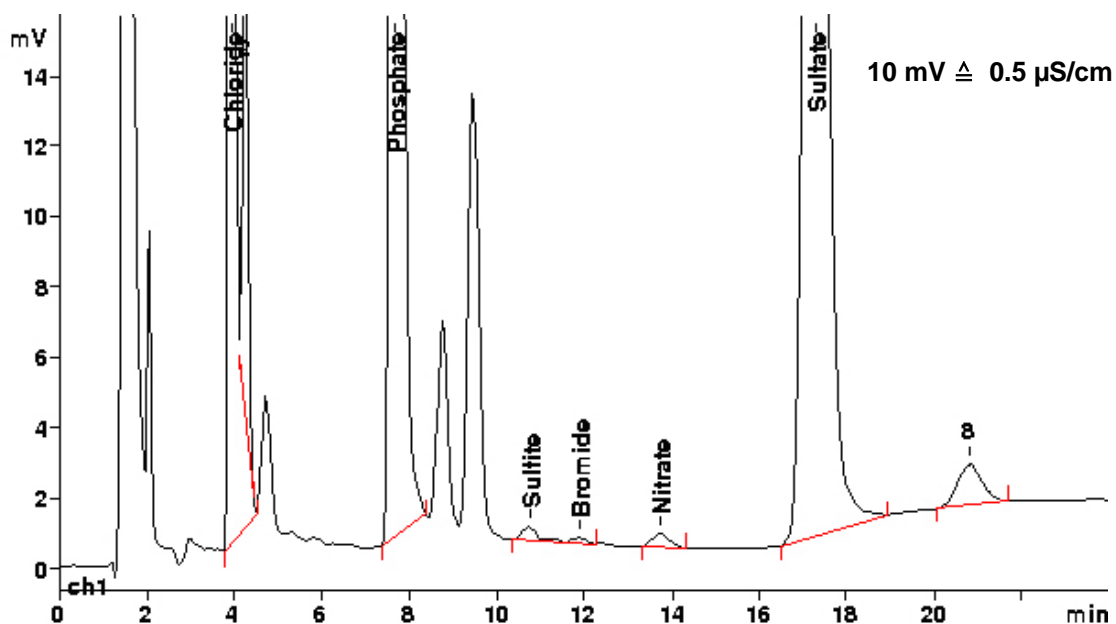
Temperature: 30 °C

Eluent: 6.0 mmol/L sodium carbonate
4.0 mmol/L sodium hydrogencarbonate
5 µmol/L sodium perchlorate

Suppressor: Metrohm Suppressor Module (MSM, 50 mmol/L sulfuric acid)

Flow: 0.7 mL/min

Injection Volume: 20 µL



Results:	Chloride mg/L	Phosphate mg/L	Sulfite mg/L	Bromide mg/L	Nitrate mg/L	Sulfate mg/L
	108.8	567.1	3.0	n.q.	1.9	152.6