

IC Application Note No. S-222

Title: Anions in borate effluent

Summary: Determination of fluoride, chloride, nitrate, phosphate and sulfate in a borate effluent applying anion chromatography with conductivity detection after chemical suppression.

Sample: Borate effluent

Sample Preparation: Dilution 1 : 50 with ultrapure water

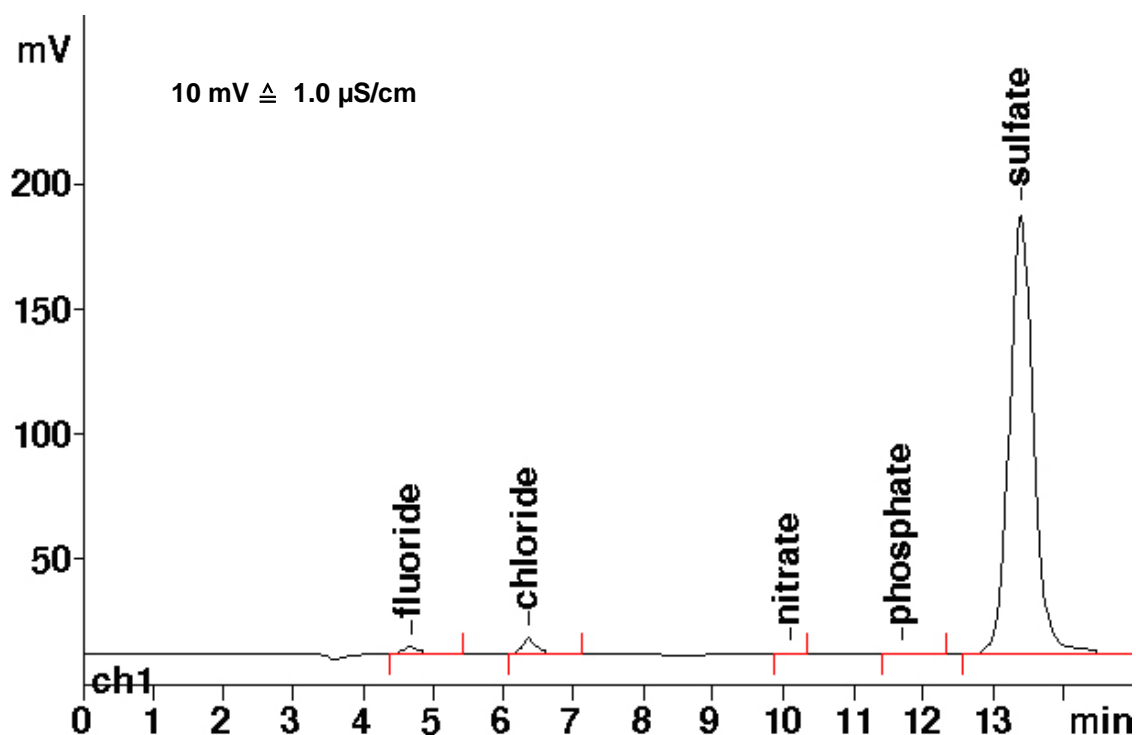
Column: 6.1006.520 Metrosep A Supp 5 – 150

Eluent: 3.2 mmol/L sodium carbonate
1.0 mmol/L sodium hydrogencarbonate

Suppressor: Metrohm Suppressor Module (MSM, 50 mmol/L sulfuric acid)

Flow: 0.7 mL/min

Injection Volume: 10 μ L



Results:	Fluoride mg/L	Chloride mg/L	Nitrate mg/L	Phosphate mg/L	Sulfate mg/L
	9.05	33.75	0.38	1.76	2619

See AN N-65 for the determination of borate in the same sample.