

IC Application Note No. S-221

Title: Sulfate, phosphate and pyrophosphate in human and mice urine

Summary: Determination of sulfate, phosphate and pyrophosphate in human urine and mice urine applying anion chromatography with conductivity detection after chemical suppression.

Sample: Human urine and mice urine

Sample Preparation: Inline ultrafiltration prior to injection

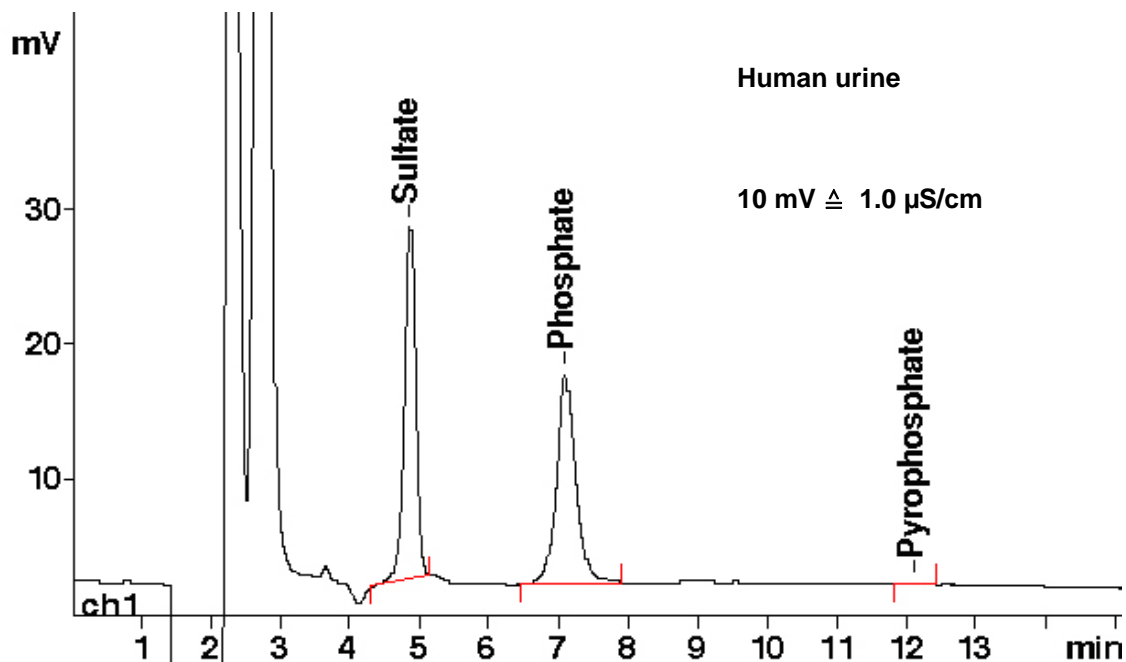
Column: 6.1006.510 Metrosep A Supp 5 – 100

Eluent: 27 mmol/L lithium hydroxide
2% acetonitrile

Suppressor: Metrohm Suppressor Module (MSM, 100 mmol/L sulfuric acid, 1% acetonitrile)

Flow: 0.7 mL/min

Injection Volume: 20 µL



Results:	Sulfate µmol/L	Phosphate µmol/L	Pyrophosphate µmol/L
Human urine	1.596	5.567	n.d

This application works for mice urine as well.