

IC Application Note No. S-211

Title: Sulfate in ethanol used as gasoline additive

Summary: Determination of sulfate in an ethanol sample used as an additive for gasoline applying anion chromatography with conductivity detection after chemical suppression.

Sample: Ethanol

Sample Preparation: Direct injection after Metrohm Inline Filtration

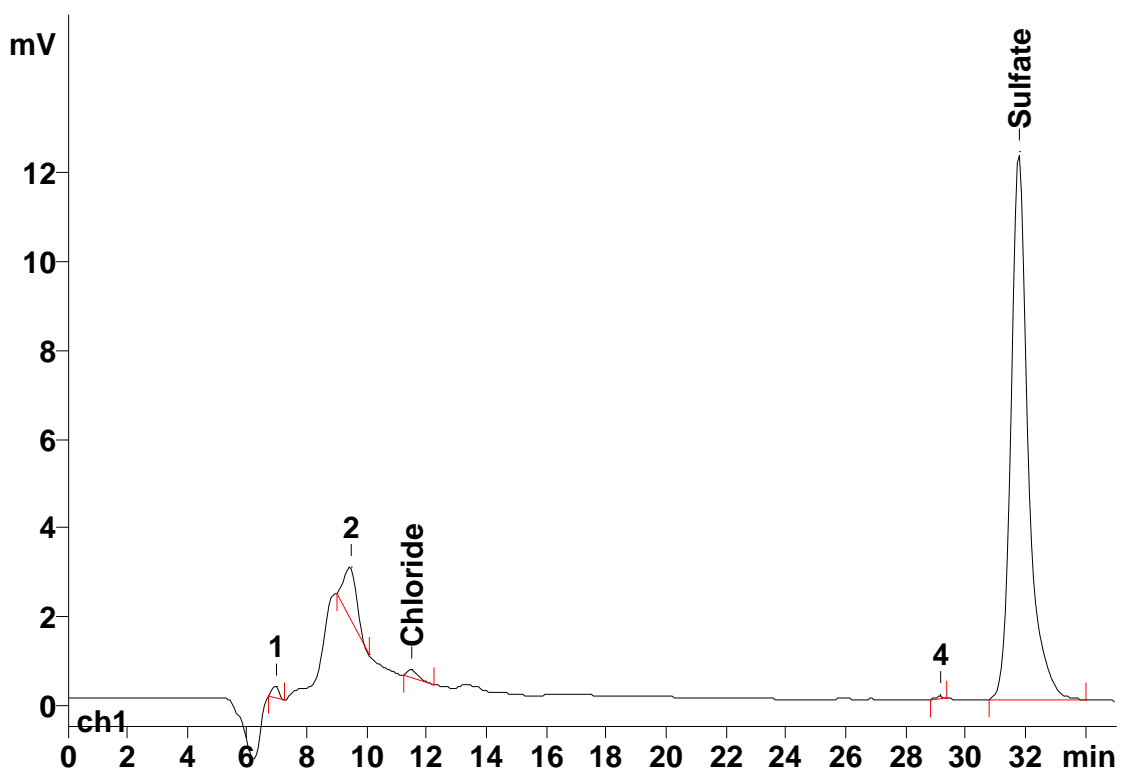
Column: 6.1006.530 Metrosep A Supp 5 – 250

Eluent: 5 mmol/L sodium carbonate
1 mmol/L sodium hydrogencarbonate

Suppressor: Metrohm Suppressor Module (MSM, 50 mmol/L sulfuric acid)

Flow: 0.5 mL/min

Injection Volume: 20 μ L



Results:

Sulfate
mg/L

0.307