

IC Application Note No. S-168

Title: Bromate in mineral water

Summary: Determination of bromate in mineral water using anion chromatography with conductivity detection after chemical suppression.

Sample: Mineral water

Sample Preparation: Dilution 1 : 1 with ultrapure water

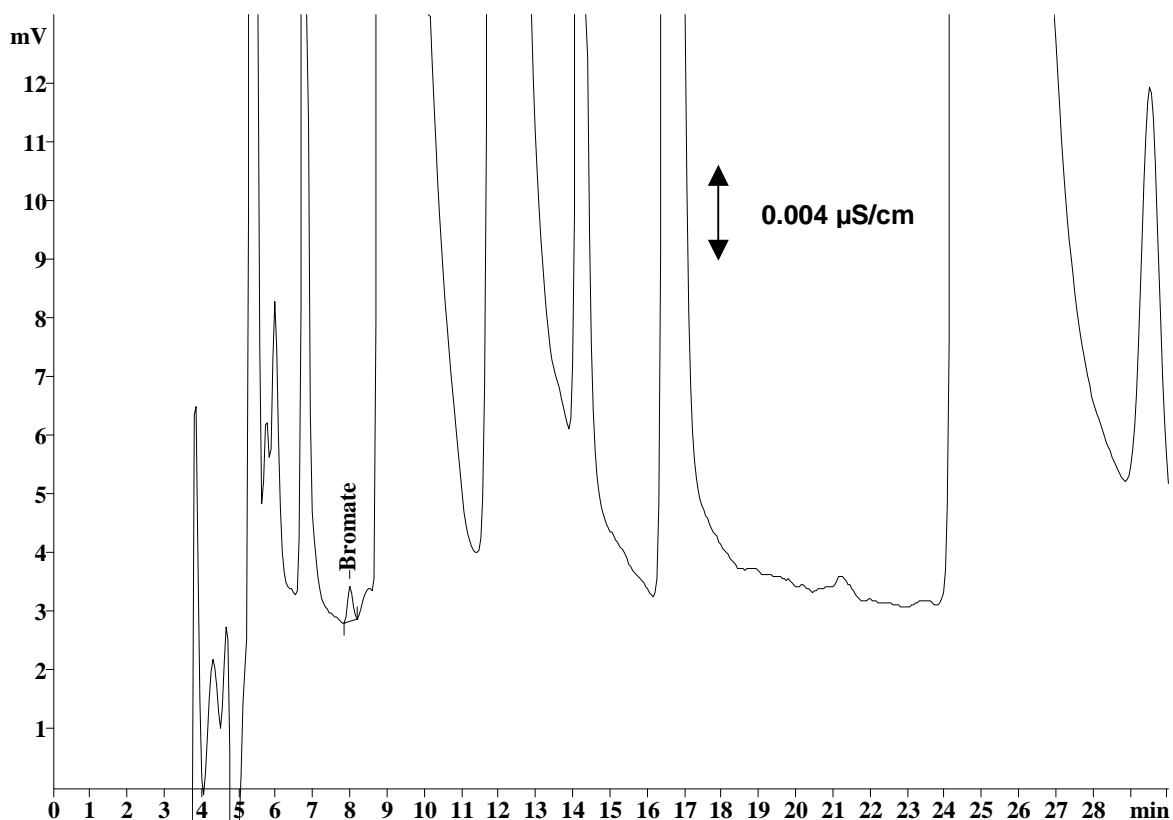
Column: 6.1006.530 Metrosep A SUPP 5 – 250

Eluent: 1.0 mmol/L sodium hydrogen carbonate
3.2 mmol/L sodium carbonate

Suppressor: Metrohm Suppressor Module (MSM, 50 mmol/L H₂SO₄)

Flow: 0.7 mL/min

Injection Volume: 50 µL



Results:	Bromate (injected) µg/L	Bromate (in the sample) µg/L
	2.0	4.0