

IC Application Note No. S-145

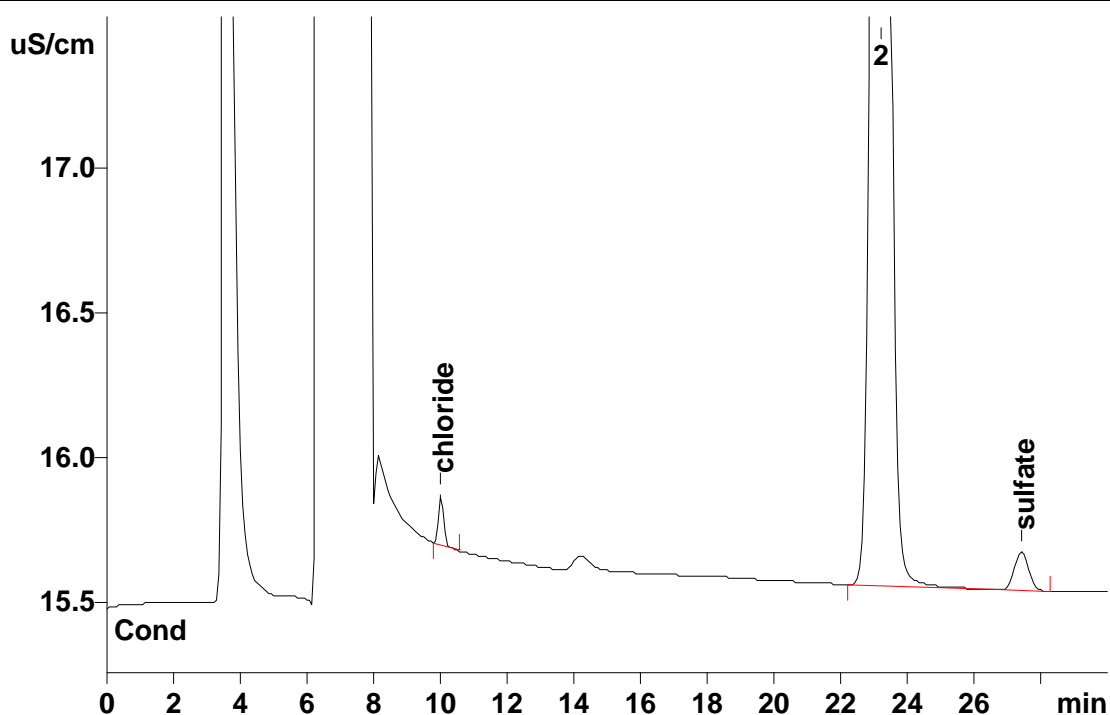
Title: Chloride and sulfate in hypophosphoric acid

Summary: Determination of chloride and sulfate in hypophosphoric acid using anion chromatography with conductivity detection after chemical suppression.

Sample: Hypophosphoric acid

Sample Preparation: Dilution 1 : 250 with ultrapure water, injection after inline neutralization using the 793 Sample Prep Module

Column: 6.1006.530 Metrosep A SUPP 5 – 250
Eluent: 3.2 mmol/L sodium carbonate, 1.0 mmol/L sodium hydrogencarbonate
Suppressor: MSM (50 mmol/L H₂SO₄)
Neutralization: 793 (100 mmol/L NaOH, suprapur)
Flow: 0.7 mL/min
Injection Volume: 20 µL



Results:	Chloride mg/L	Sulfate mg/L
	29.1	85.3