

# IC Application Note No. S-105

**Title:** Traces of chlorite and bromate in tap water without sample preparation

**Summary:** Determination of traces of chlorite and bromate in Herisau tap water with direct injection using anion chromatography with conductivity detection after chemical suppression.

**Sample:** Herisau tap water

**Sample Preparation:**

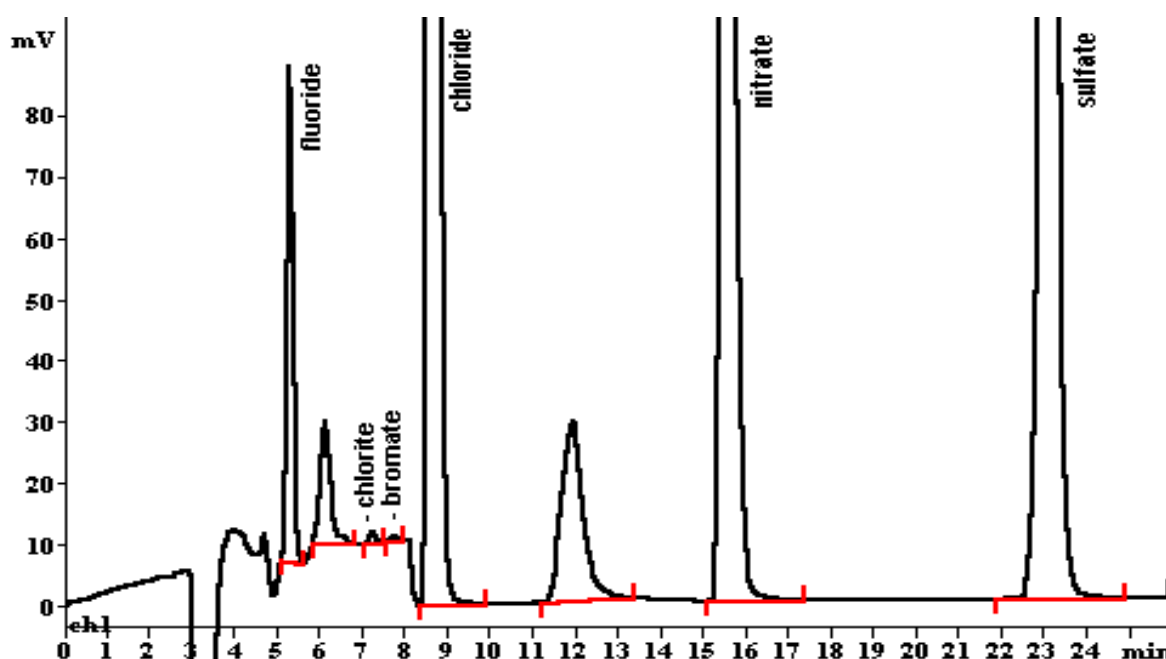
**Column:** 6.1006.530 Metrosep A Supp 5-250

**Eluent:** 1.0 mmol/L sodium hydrogencarbonate,  
3.2 mmol/L sodium carbonate

**Suppressor:** Metrohm Suppressor Module (MSM, 50 mmol/L H<sub>2</sub>SO<sub>4</sub>)

**Flow:** 0.7 mL/min

**Injection Volume:** 50 µL



<b>Results:</b>	F mg/L	ClO <sub>2</sub> <sup>-</sup> µg/L*	BrO <sub>3</sub> <sup>-</sup> µg/L*	Cl <sup>-</sup> mg/L	NO <sub>3</sub> <sup>-</sup> mg/L	SO <sub>4</sub> <sup>2-</sup> mg/L
* spiked	0.047	5.0	5.0	6.70	7.97	5.03

Full Scale: 2 µS/cm, at 8.1 min change to 10 µS/cm