

IC Application Note No. S-99

Title: Trace anions in brine

Summary: Determination of bromide and sulfate in brine (300 g/L NaCl) using anion chromatography with conductivity detection after chemical suppression.

Sample: Brine (300 g/L NaCl)

Sample Preparation: Dilution 1: 10

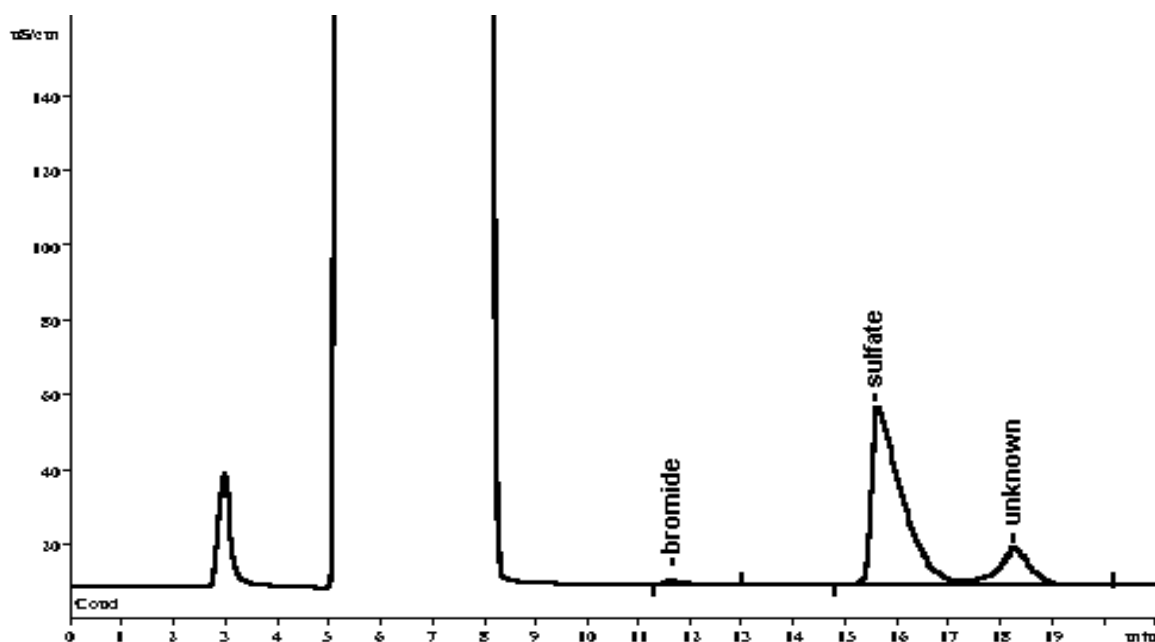
Column: 6.1005.300 Metrosep A Supp 1

Eluent: 4 mmol/L sodium carbonate

Suppressor: Metrohm Suppressor Module (MSM, 50 mmol/L H₂SO₄)

Flow: 1.0 mL/min

Injection Volume: 20 µL



Results:	Bromide g/L	Sulfate g/L
	0.05	2.64