

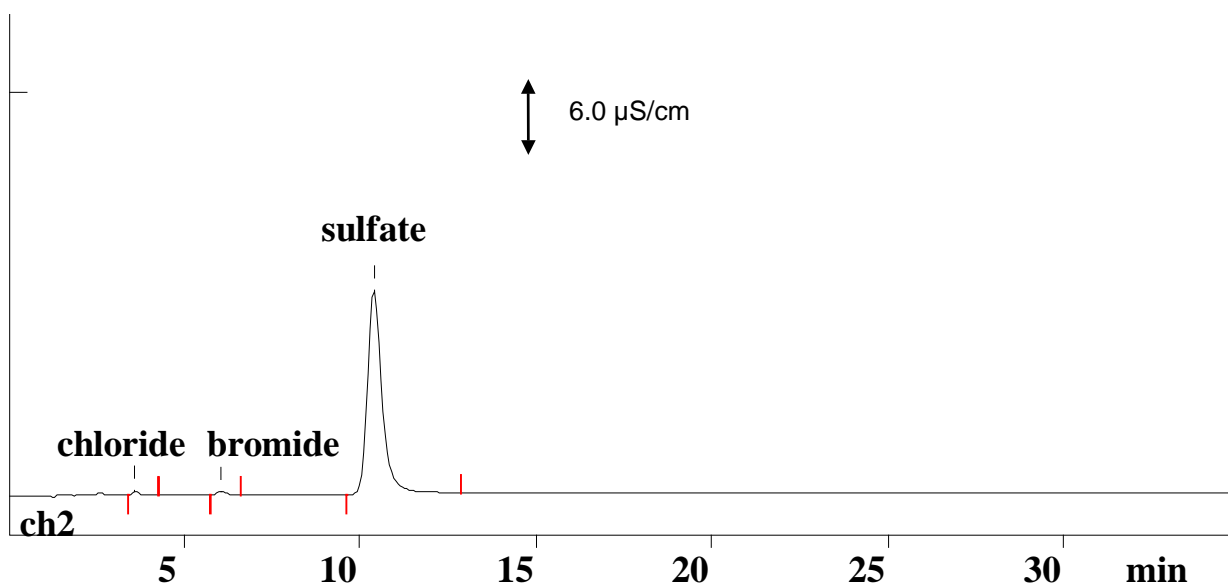
IC Application Note No. S-69

Title: Chloride, bromide and sulfate in waste water

Summary: Determination of chloride, bromide and sulfate in photographic process waste water using anion chromatography with conductivity detection after chemical suppression **.

Sample: Photographic process waste water
Sample Preparation: Dilution 1 : 500

Column: 6.1006.100 Metrosep Anion Dual 2
Eluent: 3.7 mmol/L sodium hydrogencarbonate, 1.7 mmol/L sodium carbonate, 9% acetone
Suppressor: Metrohm Suppressor Module (MSM, 50 mmol/L H₂SO₄)
Flow: 0.8 mL/min
Injection Volume: 20 µL



Results:	chloride mg/L	bromide mg/L	sulfate g/L
	375	750	51.5

** For results of amperometric detection see S-70