

IC Application Note No. S-25

Title: Chloride, bromide, phosphate and sulfate in ashed baking additive

Summary: Determination of chloride, bromide, phosphate and sulfate in ashed baking additive using anion chromatography with conductivity detection after chemical suppression.

Sample: Ashed baking additive

Sample Preparation: 0.1 g in 50 mL HNO₃ (1 mmol/L)

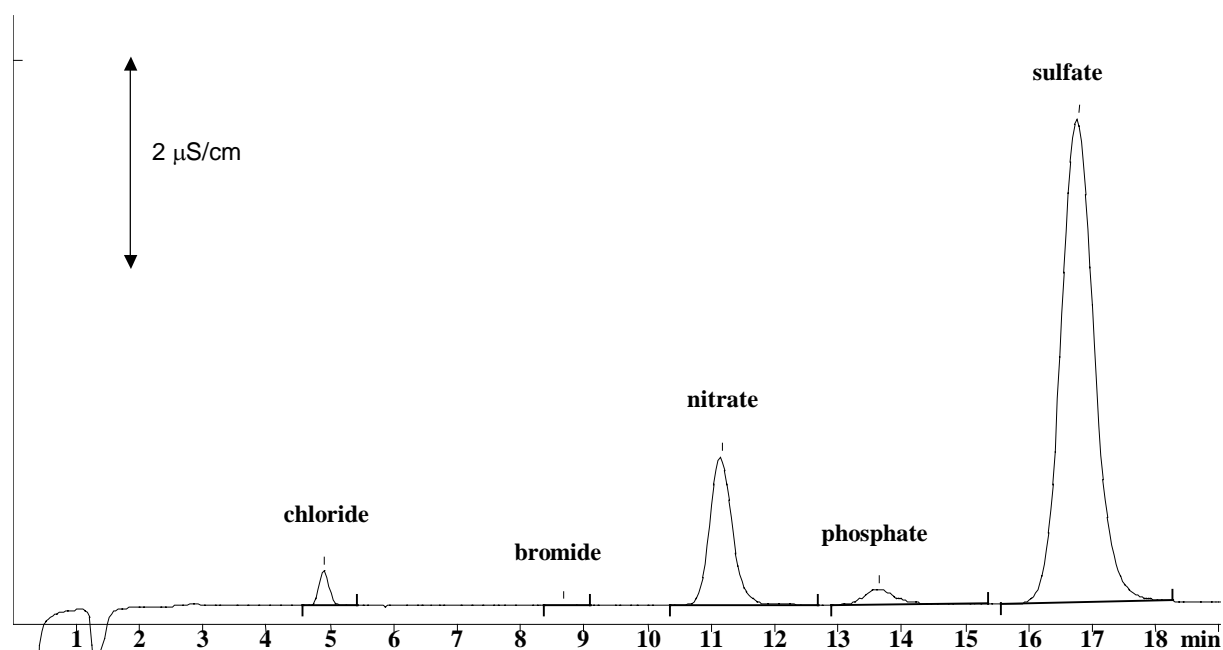
Column: 6.1006.100 Metrosep Anion Dual 2

Eluent: 2.0 mmol/L sodium hydrogencarbonate,
1.3 mmol/L sodium carbonate

Suppressor: Metrohm Suppressor Module (MSM, 50 mmol/L H₂SO₄)

Flow: 0.8 mL/min

Injection Volume: 20 µL



Results:	chloride mg/g	bromide mg/g	phosphate mg/g	sulfate mg/g
	11.7	0.3	37.8	630.9