

# IC Application Note No. S-23

**Title:** Phosphate and sulfate in cleaner solution

**Summary:** Determination of phosphate and sulfate in a cleaning solution using anion chromatography with conductivity detection after chemical suppression.

**Sample:** Cleaning Solution

**Sample Preparation:** Dilution 1:20'000

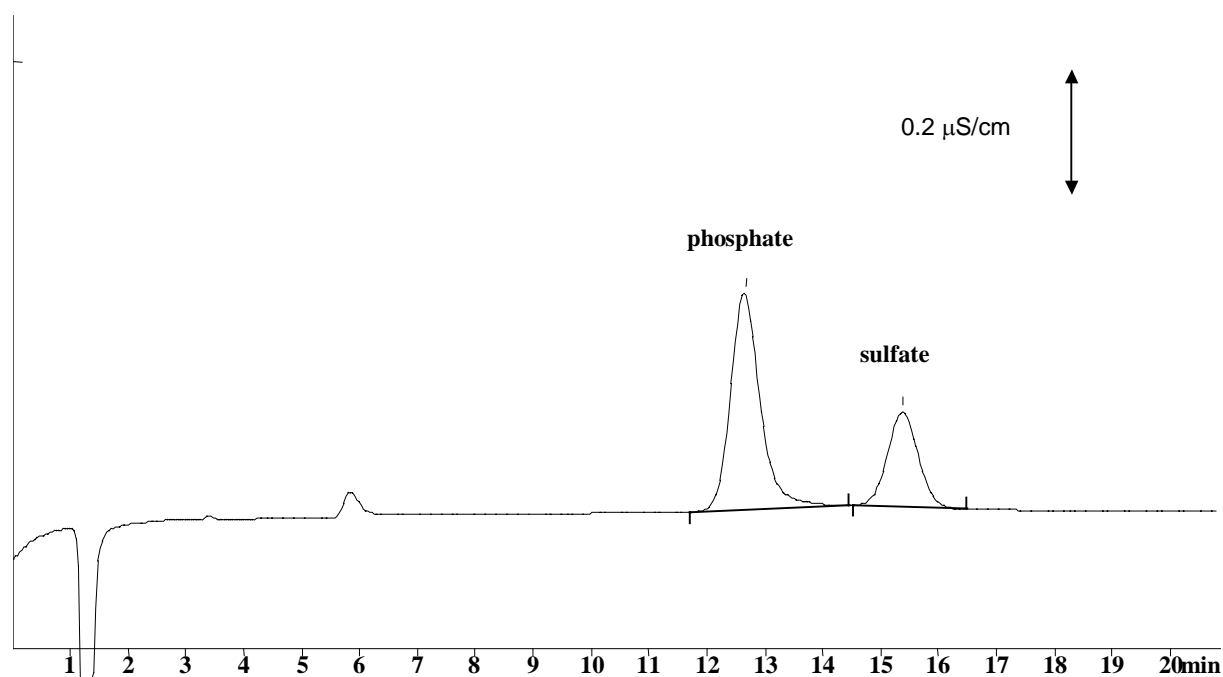
**Column:** 6.1006.100 Metrosep Anion Dual 2

**Eluent:** 2.0 mmol/L sodium hydrogencarbonate,  
1.3 mmol/L sodium carbonate

**Suppressor:** Metrohm Suppressor Module (MSM, 50 mmol/L H<sub>2</sub>SO<sub>4</sub>)

**Flow:** 0.8 mL/min

**Injection Volume:** 20 µL



<b>Results:</b>	phosphate g/L	sulfate g/L
	<b>89.50</b>	<b>21.59</b>