

IC Application Note No. S-16

Title: Anions in cola drink

Summary: Determination of chloride, nitrate, phosphate and sulfate in Cola using anion chromatography with conductivity detection after chemical suppression.

Sample: Cola

Sample Preparation: Dilution 1:5

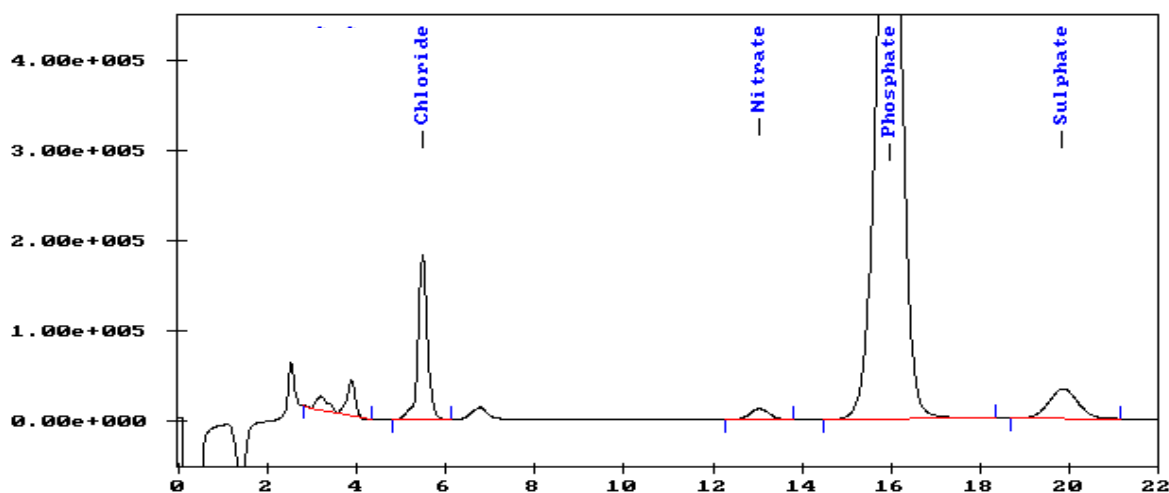
Column: 6.1006.100 Metrosep Anion Dual 2

Eluent: 2.0 mmol/L sodium hydrogencarbonate,
1.3 mmol/L sodium carbonate

Suppressor: Metrohm Suppressor Module (MSM, 50 mmol/L H₂SO₄)

Flow: 0.8 mL/min

Injection Volume: 20 µL



Results:

| Cl ⁻ mg/L | NO ₃ ⁻ mg/L | HPO ₄ ²⁻ mg/L | SO ₄ ²⁻ mg/L |
|-------------------------|--------------------------------------|--|---------------------------------------|
| 15.2 | 3.9 | 506.0 | 11.8 |