

IC Application Note No. S-7

Title: Chloride, nitrate, phosphate and sulfate in waste water

Summary: Determination of chloride, nitrate, phosphate and sulfate in waste water using anion chromatography with conductivity detection after chemical suppression.

Sample: Waste water

Sample Preparation: Dilution 1:50

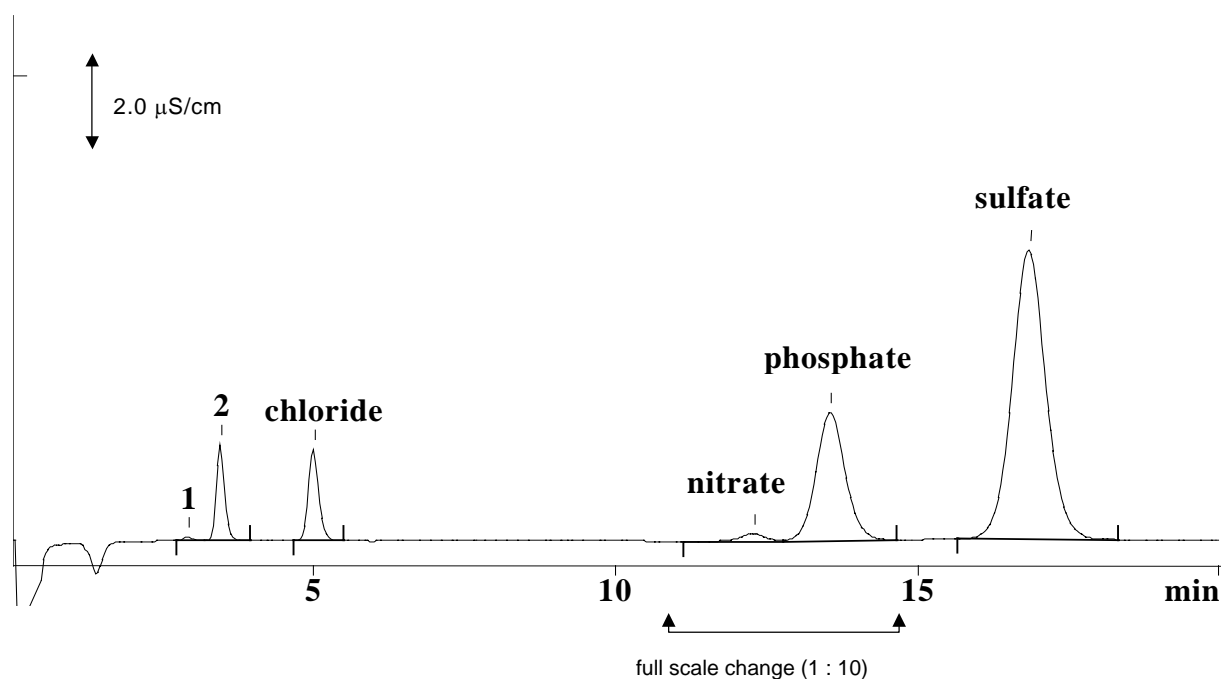
Column: 6.1006.100 Metrosep Anion Dual 2

Eluent: 2.0 mmol/L sodium hydrogencarbonate,
1.2 mmol/l sodium carbonate

Suppressor: Metrohm Suppressor Module (MSM, 50 mmol/L H₂SO₄)

Flow: 0.8 mL/min

Injection Volume: 20 µL



Results:	Cl ⁻ mg/L	NO ₃ ⁻ mg/L	HPO ₄ ²⁻ mg/L	SO ₄ ²⁻ mg/L
	129.1	3.7	173.0	1632.8

Remarks: Components 1 and 2 are most probably organic acids (not identified)