

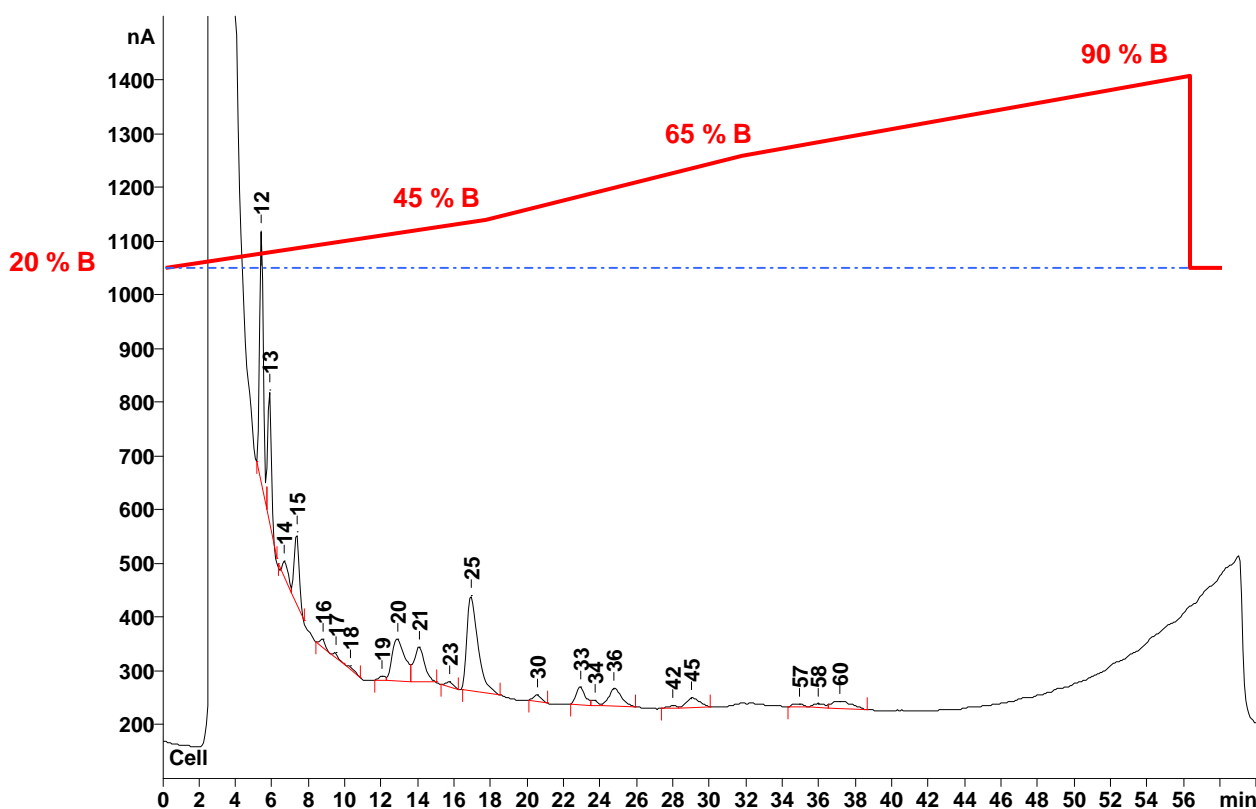
IC Application Note No. P-29

Title: Polysaccharides in a plant extract

Summary: Determination of polysaccharides (n glucose units) in a plant extract using pulsed amperometric detection and a high pressure gradient.

Sample: Plant extract (cistus laurifolius)
Sample Preparation: 1 g of the dried sample dissolved in ultrapure water, injection after filtration

Column: 6.1005.300 Metrosep A Supp 1
Eluent: A: 100 mmol/L sodium hydroxide, 10 mmol/L sodium acetate
 B: 100 mmol/L sodium hydroxide, 400 mmol/L sodium acetate
Voltage: 50 mV **Temperature:** 32 °C
Flow: 1.0 mL/min
Injection Volume: 20 µL



Peaks are marked with the number of glucose units in the respective polysaccharide. For the identification, Application Note P-28 was used.