

IC Application Note No. P-15

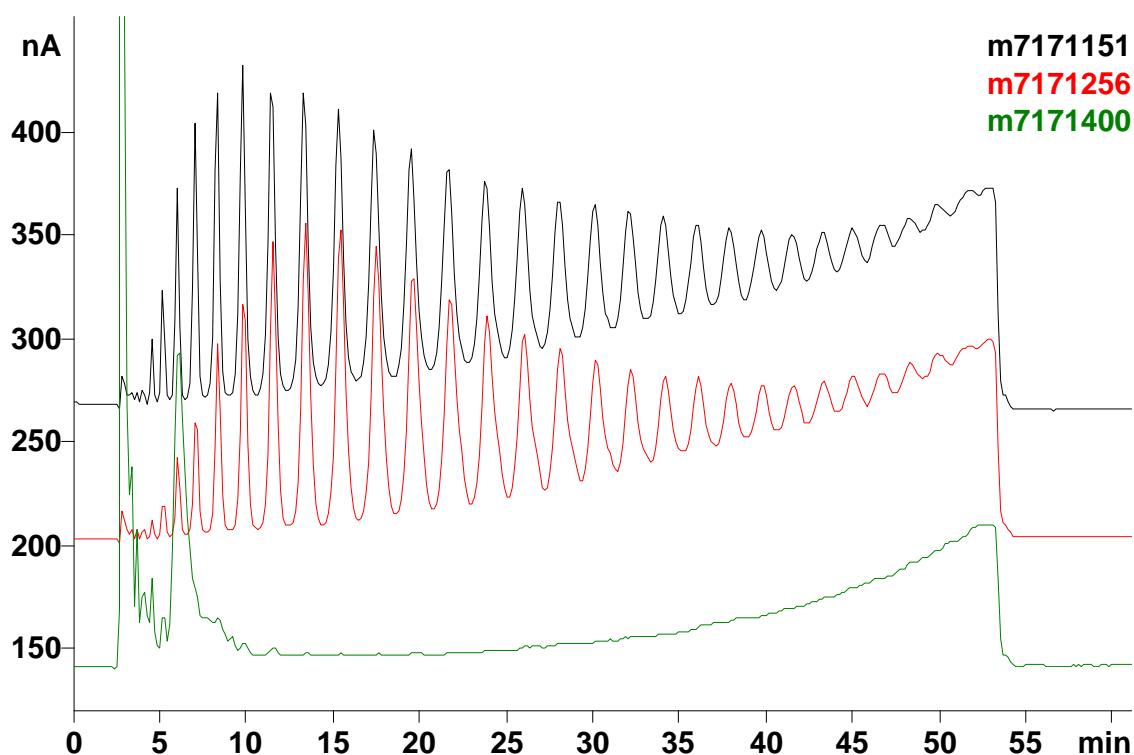
Title: Separation of polysaccharides (inulin)

Summary: Separation of polysaccharides with increasing numbers of inulin units using gradient elution and pulsed amperometric detection.

Sample: Extract of "endivia" radix

Standard: Inuline from "dahlia tubers" and "chicory"

Column: 6.1005.300 Metrosep A SUPP 1
Eluent A: 100 mmol/L sodium hydroxide, 10 mmol/L sodium acetate
Eluent B: 200 mmol/L sodium hydroxide, 200 mmol/L sodium acetate
Voltage: 50 mV **Temperature:** 32 °C
Flow: 1.0 mL/min
Injection Volume: 20 µL



m7171151: 3 g/L chicory inulin
m7171256: 3 g/L dahlia inulin
m7171400: Endivia extract diluted 1:25