

IC Application Note No. C-97

Title: Cations in ethanol used as biofuel

Summary: Determination of traces of lithium, sodium, ammonium, potassium, calcium and magnesium in ethanol using cation chromatography with direct conductivity detection applying Metrohm Inline Matrix Elimination.

Sample: Ethanol

Sample Preparation: Metrohm Inline Matrix Elimination

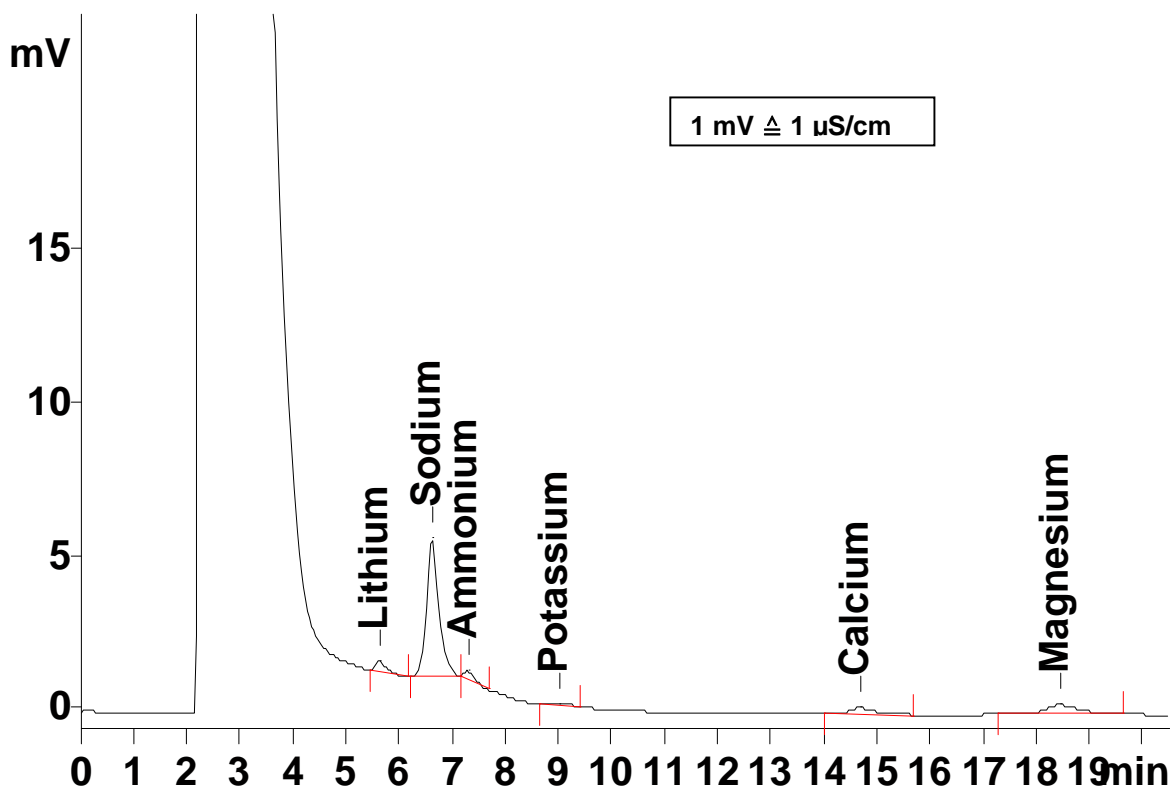
Column: 6.1010.230 Metrosep C 2 – 250

Preconc. Column: 6.1010.310 Metrosep C PCC 1 HC

Eluent: 4.0 mmol/L tartaric acid
0.75 mmol/L dipicolinic acid

Flow: 1.0 mL/min

Injection Volume: 20 µL



Results:	Lithium	Sodium	Ammonium	Potassium	Calcium	Magnesium
Conc. [mg/L]	0.07	0.33	0.21	0.02	0.13	0.07