

Application Bulletin



Of interest for:
 Medical laboratories
 Biological laboratories

No. 154/2 e
 IC 5-01

Ion chromatographic determination of chloride, nitrite, nitrate, phosphate, sulphate and thiocyanate in saliva

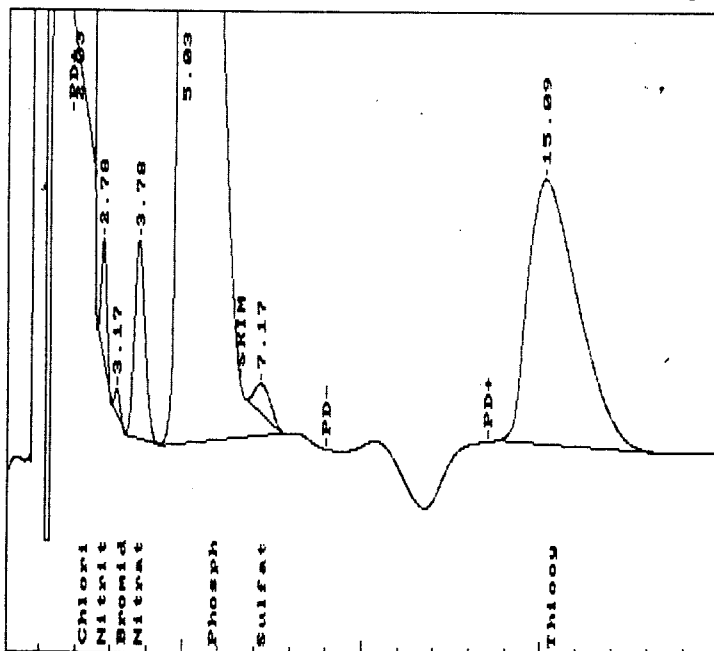
Apparatus	<table border="0"> <tbody> <tr> <td>▶ 2.690.00X0 Ion Chromatograph</td> <td>Full Scale: 10 μS/cm</td> </tr> <tr> <td></td> <td>Damping: 0</td> </tr> <tr> <td></td> <td>Thermostat: on</td> </tr> <tr> <td></td> <td>Sample loop: 100 μL</td> </tr> <tr> <td>▶ 6.1009.000 IC anion column SUPER-SEP</td> <td>Length: 100 mm</td> </tr> <tr> <td></td> <td>Diameter: 4.6 mm</td> </tr> <tr> <td>▶ 2.697.0010 IC Pump</td> <td>Flow: 1.5 mL/min</td> </tr> <tr> <td>▶ PE Nelson PC Integrator</td> <td>Evaluation: area</td> </tr> </tbody> </table>	▶ 2.690.00X0 Ion Chromatograph	Full Scale: 10 μ S/cm		Damping: 0		Thermostat: on		Sample loop: 100 μ L	▶ 6.1009.000 IC anion column SUPER-SEP	Length: 100 mm		Diameter: 4.6 mm	▶ 2.697.0010 IC Pump	Flow: 1.5 mL/min	▶ PE Nelson PC Integrator	Evaluation: area
▶ 2.690.00X0 Ion Chromatograph	Full Scale: 10 μ S/cm																
	Damping: 0																
	Thermostat: on																
	Sample loop: 100 μ L																
▶ 6.1009.000 IC anion column SUPER-SEP	Length: 100 mm																
	Diameter: 4.6 mm																
▶ 2.697.0010 IC Pump	Flow: 1.5 mL/min																
▶ PE Nelson PC Integrator	Evaluation: area																
Reagents	<table border="0"> <tbody> <tr> <td>▶ Eluent</td> <td>$c(\text{boric acid}) = 4.5 \text{ mmol/L}$, $c(\text{mannite}) = 13.5 \text{ mmol/L}$ in 2% methanol pH = 7.8 adjusted with TRIS</td> </tr> <tr> <td>▶ Standard</td> <td> 5 ppm Cl^- 1 ppm NO_2^- 5 ppm NO_3^- 10 ppm HPO_4^{2-} 2 ppm SO_4^{2-} 10 ppm SCN^- (as sodium or potassium salts in dist. water) </td> </tr> </tbody> </table>	▶ Eluent	$c(\text{boric acid}) = 4.5 \text{ mmol/L}$, $c(\text{mannite}) = 13.5 \text{ mmol/L}$ in 2% methanol pH = 7.8 adjusted with TRIS	▶ Standard	5 ppm Cl^- 1 ppm NO_2^- 5 ppm NO_3^- 10 ppm HPO_4^{2-} 2 ppm SO_4^{2-} 10 ppm SCN^- (as sodium or potassium salts in dist. water)												
▶ Eluent	$c(\text{boric acid}) = 4.5 \text{ mmol/L}$, $c(\text{mannite}) = 13.5 \text{ mmol/L}$ in 2% methanol pH = 7.8 adjusted with TRIS																
▶ Standard	5 ppm Cl^- 1 ppm NO_2^- 5 ppm NO_3^- 10 ppm HPO_4^{2-} 2 ppm SO_4^{2-} 10 ppm SCN^- (as sodium or potassium salts in dist. water)																
Sample preparation	<table border="0"> <tbody> <tr> <td>▶ The sample is diluted 1:10 with dist. water and filtered through a 0.45 μm membrane filter.</td> <td>→ Determination of nitrite, bromide, nitrate, sulphate, thiocyanate</td> </tr> <tr> <td>▶ This solution is again diluted 1:10 (totally 1:100).</td> <td>→ Determination of chloride, phosphate</td> </tr> </tbody> </table>	▶ The sample is diluted 1:10 with dist. water and filtered through a 0.45 μ m membrane filter.	→ Determination of nitrite, bromide, nitrate, sulphate, thiocyanate	▶ This solution is again diluted 1:10 (totally 1:100).	→ Determination of chloride, phosphate												
▶ The sample is diluted 1:10 with dist. water and filtered through a 0.45 μ m membrane filter.	→ Determination of nitrite, bromide, nitrate, sulphate, thiocyanate																
▶ This solution is again diluted 1:10 (totally 1:100).	→ Determination of chloride, phosphate																

Ion chromatographic determination of chloride, nitrite, nitrate, phosphate, sulphate and thiocyanate in saliva

Example

Saliva diluted 1:10

peak	substance	retention time	area evaluation
2	nitrite	2.78 min	6.21 ppm (mg/L)
3	bromide	3.17 min	1.99 ppm (mg/L)
4	nitrate	3.78 min	22.23 ppm (mg/L)
6	sulphate	7.17 min	3.47 ppm (mg/L)
7	thiocyanate	15.09 min	166.00 ppm (mg/L)



Saliva diluted 1:100

peak	substance	retention time	area evaluation
1	chloride	2.27 min	820.4 ppm (mg/L)
6	phosphate	5.98 min	574.6 ppm (mg/L)

