

# IC Application Note No. S-263

**Title:** Nitrite besides high concentration of chloride on the Metrosep A Supp 16 – 250

**Summary:** Determination of nitrite besides 1000 times higher chloride content using anion chromatography with conductivity detection after chemical suppression.

**Sample:** Standard solution

**Sample Preparation:** None

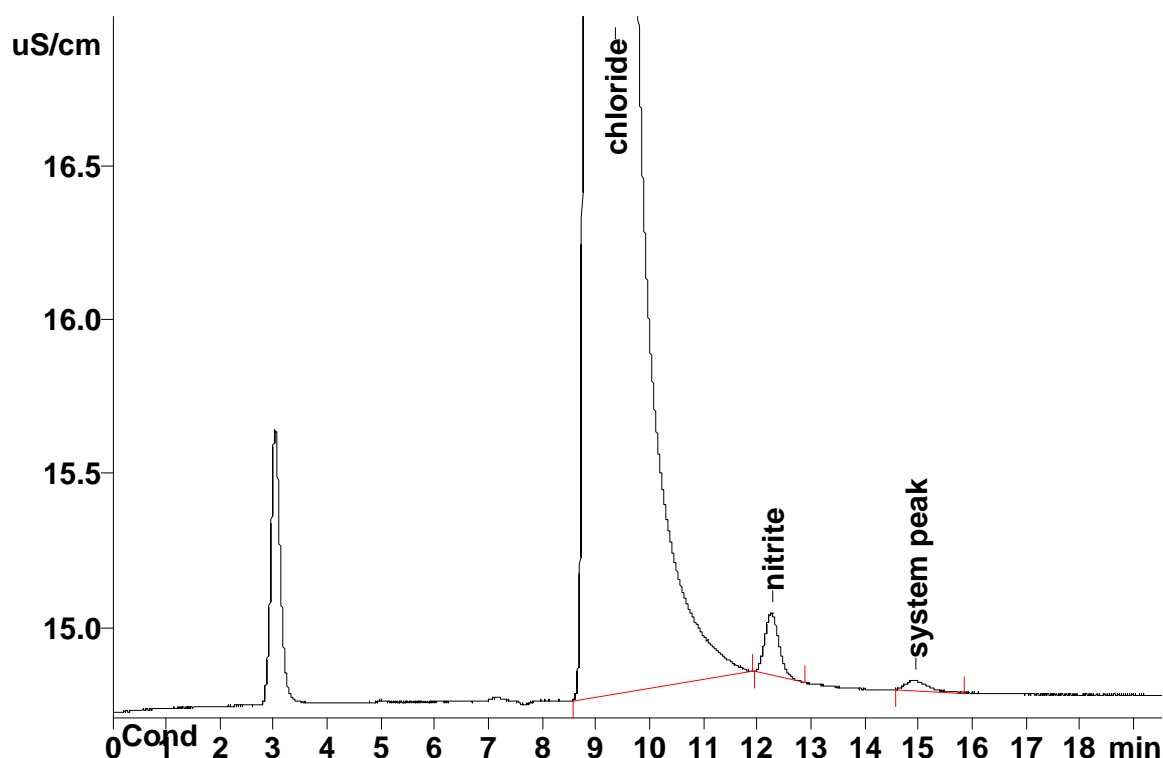
**Column:** 6.1031.430 Metrosep A Supp 16 – 250

**Eluent:** 7.5 mmol/L sodium carbonate  
0.75 mmol/L sodium hydroxide

**Suppressor:** Metrohm Suppressor Module MSM (50 mmol/L H<sub>2</sub>SO<sub>4</sub>)

**Flow:** 0.8 mL/min

**Injection Volume:** 20 µL



<b>Results:</b>	Chloride mg/L	Nitrite mg/L
	1000	1.00