

IC Application Note No. S-261

Title: Chloride, bromide, and sulfate in produced water

Summary: Determination of chloride, bromide, and sulfate in produced water using anion chromatography with conductivity detection after chemical suppression.

Sample: Produced water

Sample Preparation: Dilution 1 : 2000 with ultrapure water

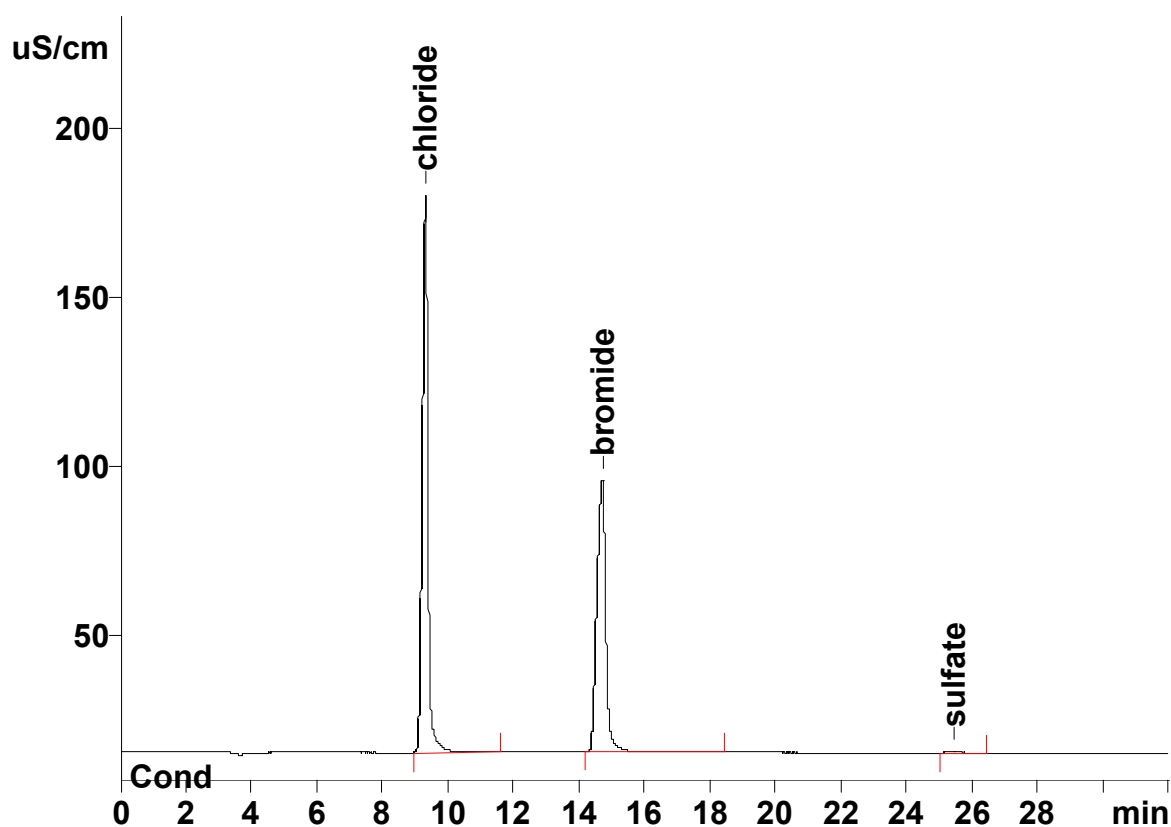
Column: 6.1006.530 Metrosep A Supp 5 - 250

Eluent: 3.2 mmol/L sodium carbonate
1.0 mmol/L sodium hydroxide

Suppressor: Metrohm Suppressor Module (MSM 100 mmol/L H₂SO₄)

Flow: 0.7 mL/min

Injection Volume: 20 µL



Results:	Chloride g/L	Bromide g/L	Sulfate g/L
	172.8	317.6	113.3