

IC Application Note No. S-245

Title: Fluoride in green tea

Summary: Determination of fluoride in green tea using anion chromatography with conductivity detection after chemical suppression.

Sample: Green tea after decomposition with KOH

Sample Preparation: Heat 0.5 g green tea and 1.0 g KOH to 500°C for 10 min. Dissolve with ultrapure water in 100 mL, filtrate (0.45 µm) prior to injection.

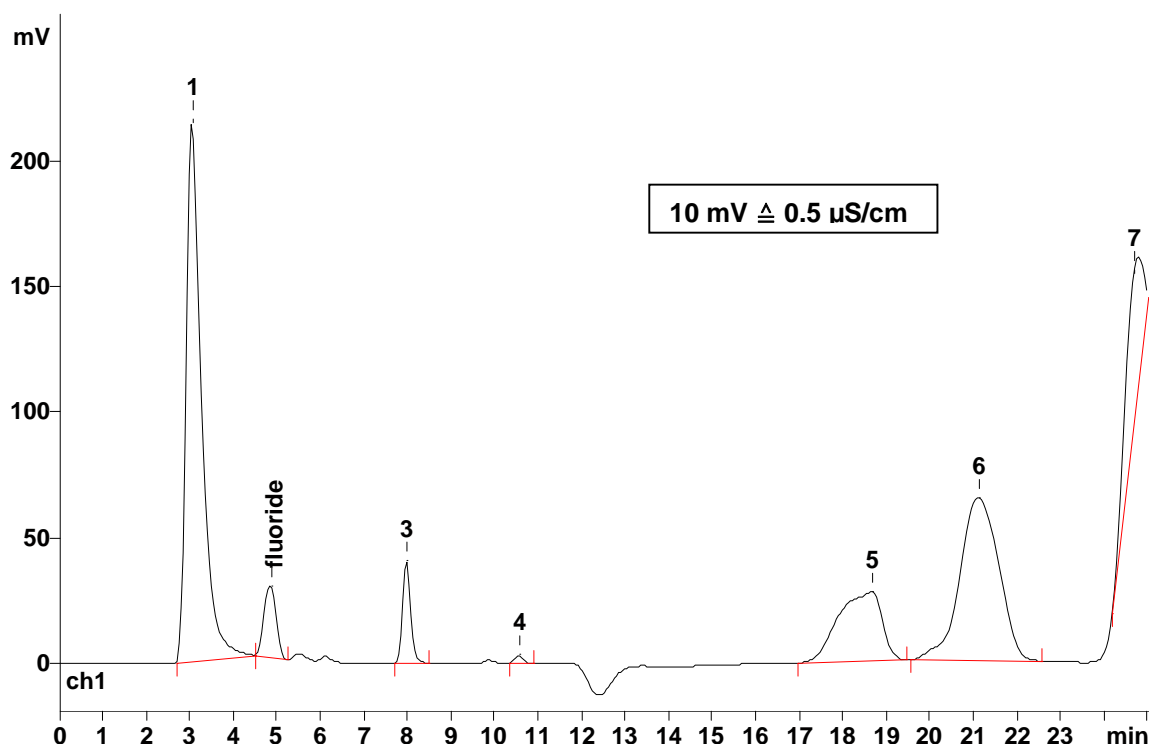
Column: 6.1006.530 Metrosep A Supp 5 – 250

Eluent: 3.2 mmol/L sodium carbonate
1.0 mmol/L sodium hydrogen carbonate

Suppressor: Metrohm Suppression Module (MSM, 50 mmol/L H₂SO₄)

Flow: 0.7 mL/min

Injection Volume: 20 µL



Results:

Fluoride
µg/g

329