

IC Application Note No. S-243

Title: Chloride, chlorate and sulfate in caustic soda (50% sodium hydroxide) applying Metrohm Inline Sample Neutralization

Summary: Determination of chloride, chlorate and sulfate in caustic soda (50% sodium hydroxide) using anion chromatography with conductivity detection after sequential suppression applying Metrohm Inline Neutralization.

Sample: 50% caustic soda lye

Sample Preparation: Metrohm Inline Neutralization after 1 : 5 dilution

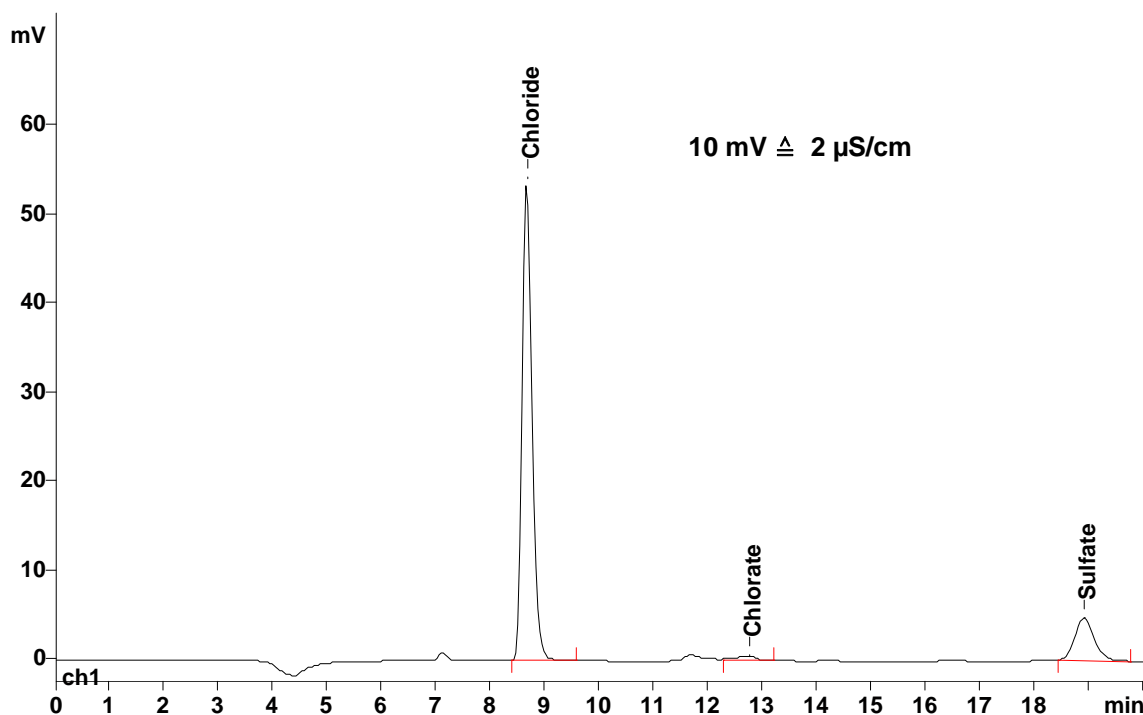
Column: 6.1006.530 Metrosep A Supp 5 – 250

Eluent: 4.0 mmol/L sodium carbonate
1.5 mmol/L sodium hydrogen carbonate

Suppressor: Sequential suppression: MSM (100 mmol/L H₂SO₄), MCS

Flow: 0.7 mL/min

Injection Volume: 20 µL



Results:	Chloride mg/L	Chlorate mg/L	Sulfate ⁻ mg/L
	23.6	10.3	14.6