

IC Application Note No. S-241

Title: Chloride and sulfate in ethanol used as biofuel (ASTM D 7319-07)

Summary: Determination of chloride and sulfate in ethanol using anion chromatography with conductivity detection after chemical suppression.

Sample: Ethanol

Sample Preparation: Direct injection

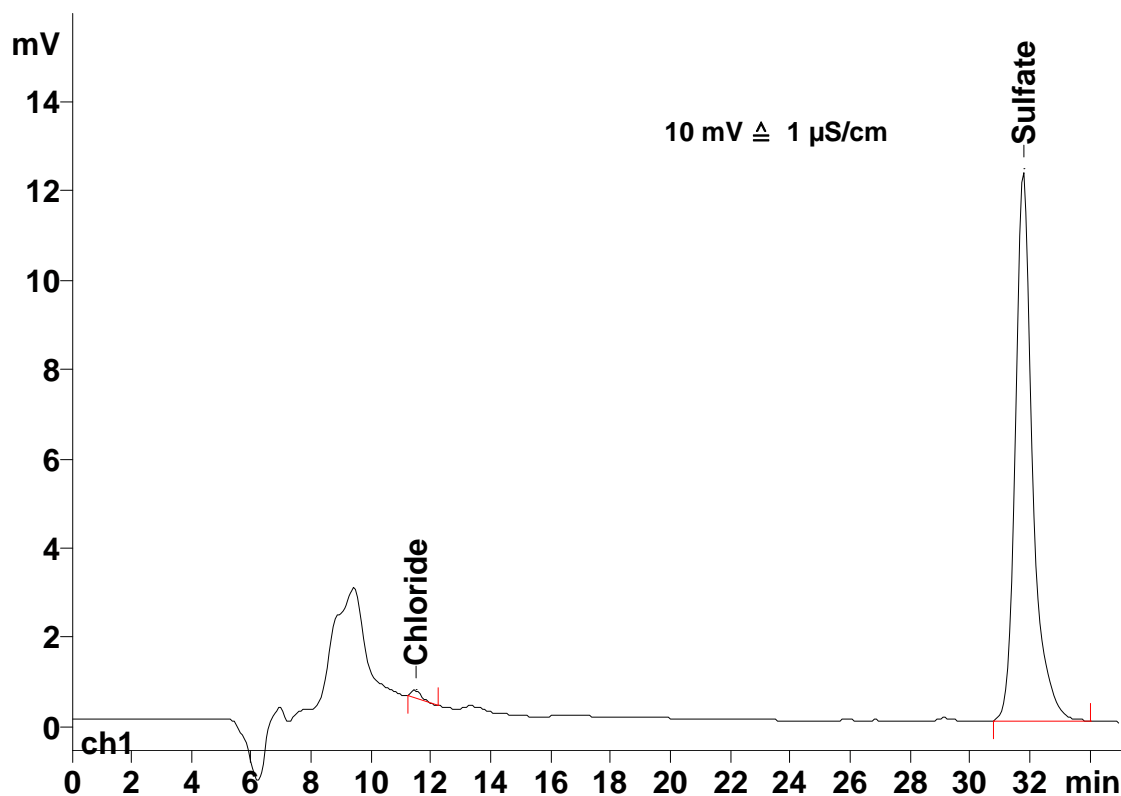
Column: 6.1006.530 Metrosep A Supp 5 – 250

Eluent: 5.0 mmol/L sodium carbonate
1.0 mmol/L sodium hydrogen carbonate

Suppressor: Sequential suppression (MSM, 100 mmol/L H₂SO₄), MCS

Flow: 0.6 mL/min

Injection Volume: 20 µL



Results:	Chloride mg/L	Sulfate mg/L
	n.q.	0.31