

IC Application Note No. S-240

Title: Chromate in cement

Summary: Determination of chromate in cement using anion chromatography with conductivity detection after chemical suppression.

Sample: Cement filtrate (450 g cement / 225 g water)

Sample Preparation: Dilution 1 : 5

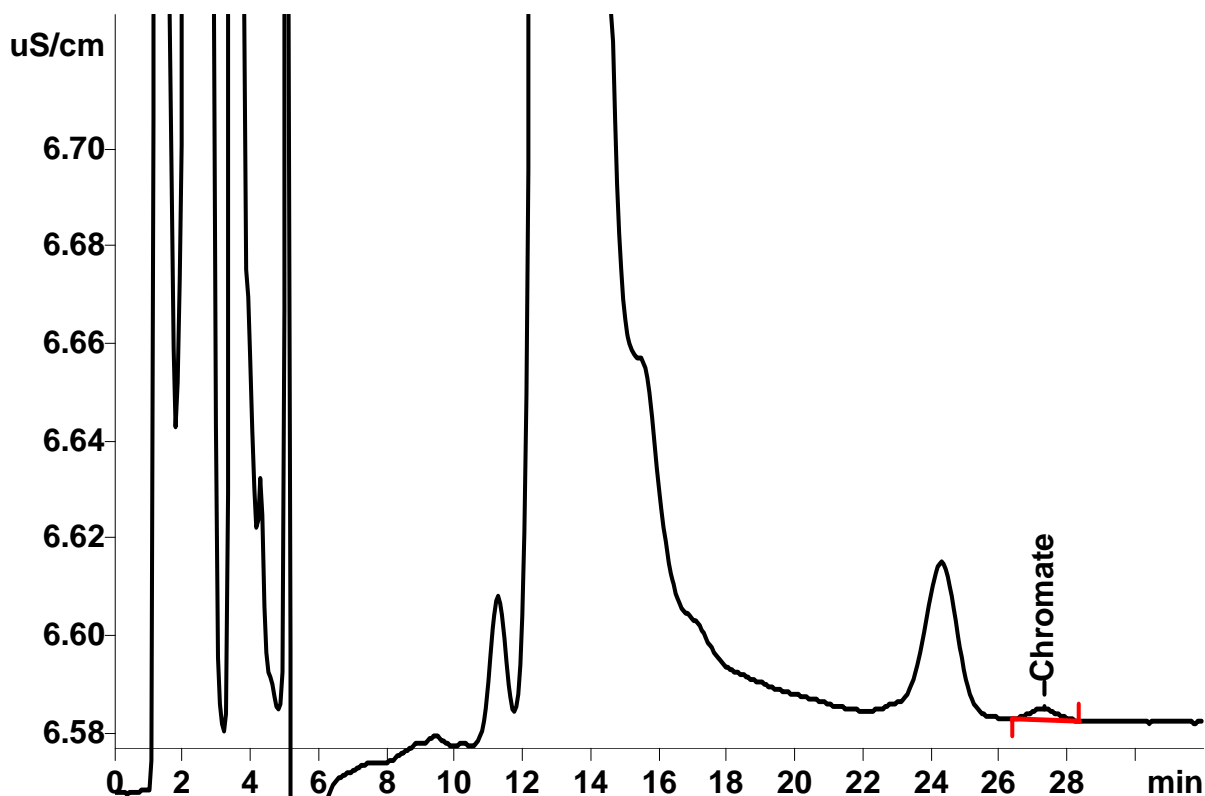
Column: 6.1006.120 Metrosep Dual 3

Eluent: 1.2 mmol/L sodium carbonate
2.0 mmol/L sodium hydrogen carbonate, 18% acetone

Suppressor: Metrohm Suppressor Module (MSM, 50 mmol/L H₂SO₄)

Flow: 1.0 mL/min

Injection Volume: 20 µL



Results:

Chromate
mg/L (filtrate)

Chromate
mg/kg (cement)

0.199

0.100