

IC Application Note No. S-203

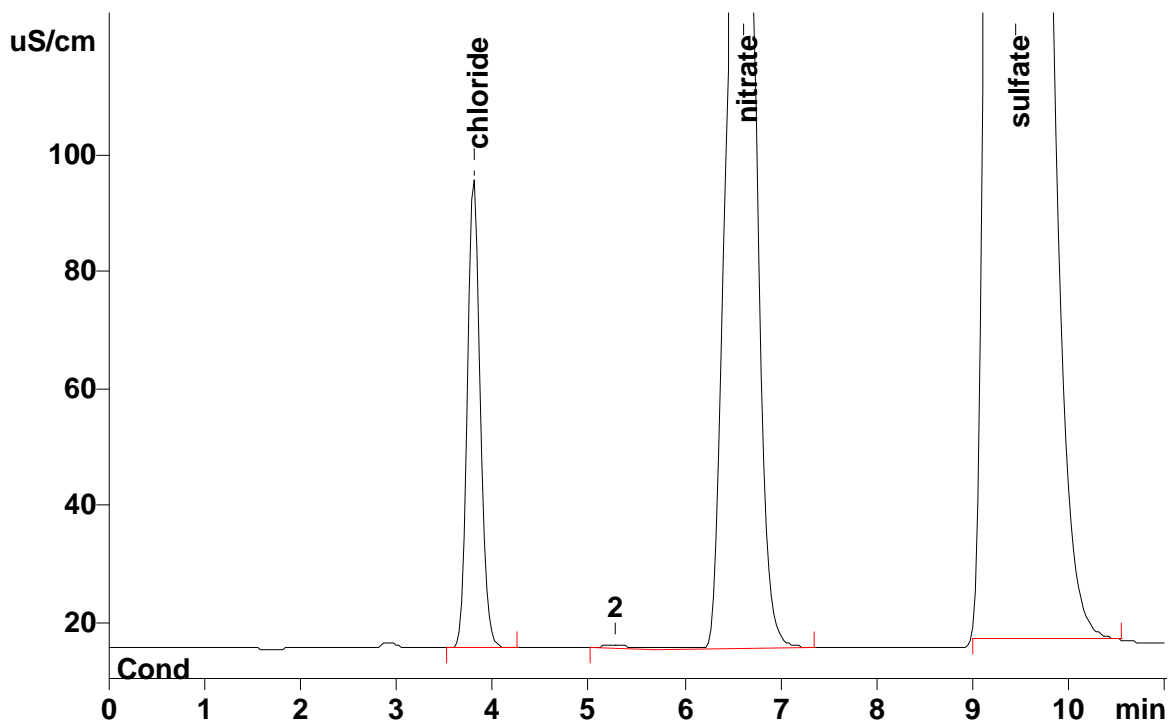
Title: Chloride in bethanechol tablets

Summary: Determination of chloride in bethanechol tablets using anion chromatography with conductivity detection after chemical suppression.

Sample: Bethanechol tablets

Sample Preparation: 0.18 g of ground tablets (10 tablets) dissolved in 2 mmol/L HNO₃

Column: 6.1006.510 Metrosep A Supp 5 – 100
Eluent: 3.2 mmol/L sodium carbonate
 1.0 mmol/L sodium hydrogencarbonate
Suppressor: Metrohm Suppressor Module (MSM, 50 mmol/L sulfuric acid)
Flow: 0.7 mL/min
Injection Volume: 20 µL



Results:	Chloride mg/L	Nitrate (from acidification)	Sulfate mg/tablet
In solution	17.58	n.q	140
Expected from bethanechol concentration	17.68		

See AN C-80 for the determination of bethanechol.