

# IC Application Note No. S-196

**Title:** Anions in water from agricultural ditches

**Summary:** Determination of fluoride, chloride, nitrite, bromide, nitrate, phosphate and sulfate in water from an agricultural ditch using anion chromatography with conductivity detection after chemical suppression.

**Sample:** Water from an agricultural ditch

**Sample Preparation:** Direct injection after Metrohm inline ultrafiltration

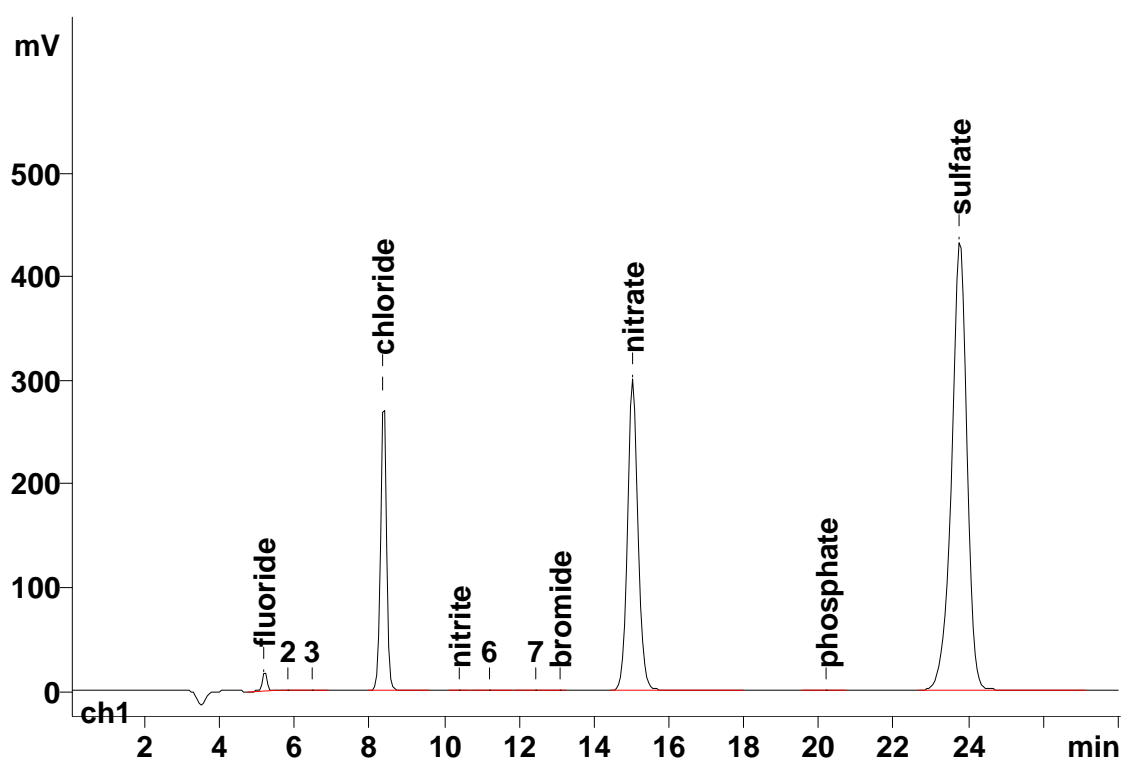
**Column:** 6.1006.530 Metrosep A Supp 5 – 250

**Eluent:** 3.2 mmol/L sodium carbonate  
1.0 mmol/L sodium hydrogencarbonate

**Suppressor:** Metrohm Suppressor Module (MSM, 50 mmol/L sulfuric acid)

**Flow:** 0.7 mL/min

**Injection Volume:** 20  $\mu$ L



<b>Results:</b>	Fluoride mg/L	Chloride mg/L	Nitrite mg/L	Bromide mg/L	Nitrate mg/L	Phosphate mg/L	Sulfate mg/L
	0.57	13.98	0.03	0.02	48.96	0.18	78.57