

# IC Application Note No. S-162

**Title:** Iodide in milk powder

**Summary:** Determination of iodide in milk powder using anion chromatography with conductivity detection after chemical suppression and inline sample preparation by dialysis.

**Sample:** Milk powder

**Sample Preparation:** 1 g sample is dissolved in 100 mL ultrapure water, injection using 754 Dialysis Unit

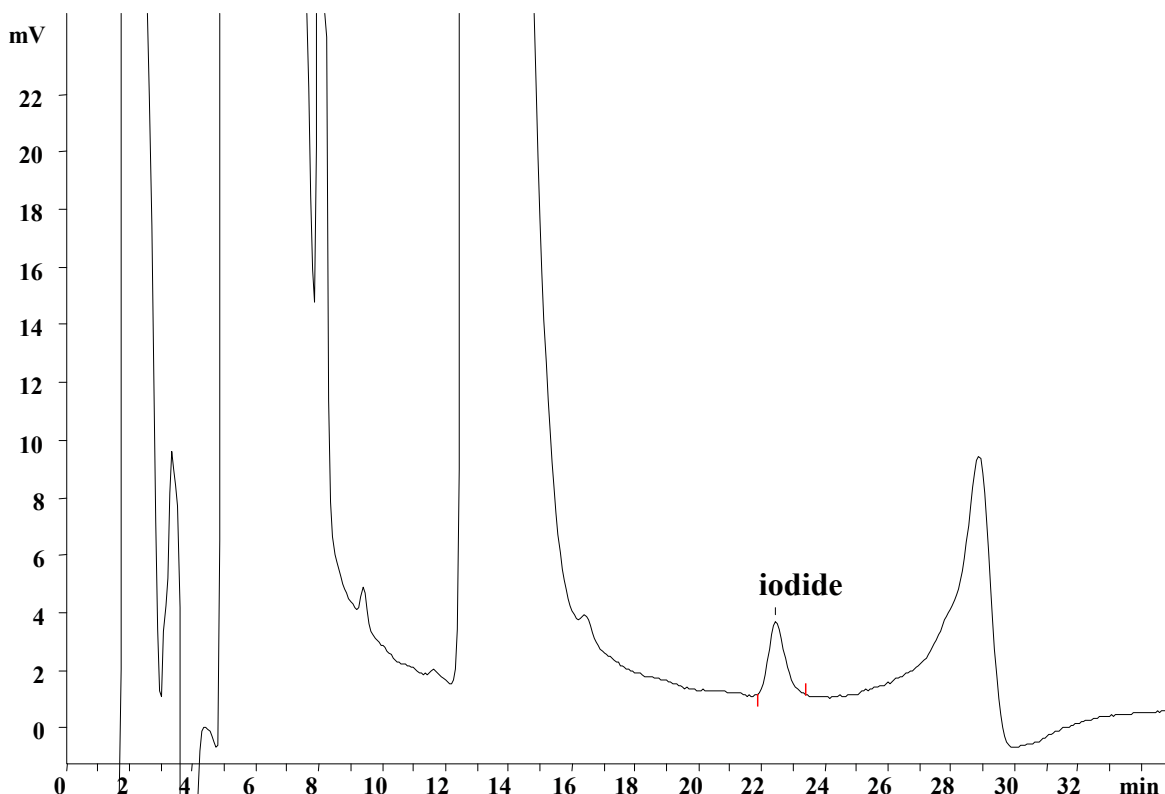
**Column:** 6.1006.520 Metrosep A Supp 5 - 150/4.0

**Eluent:** 1.0 mmol/L sodium hydrogen carbonate  
3.2 mmol/L sodium carbonate

**Suppressor:** Metrohm Suppressor Module (MSM, 50 mmol/L H<sub>2</sub>SO<sub>4</sub>)

**Flow:** 0.7 mL/min

**Injection Volume:** 20 µL



**Results:**

Iodide  
µg/g

17.8