

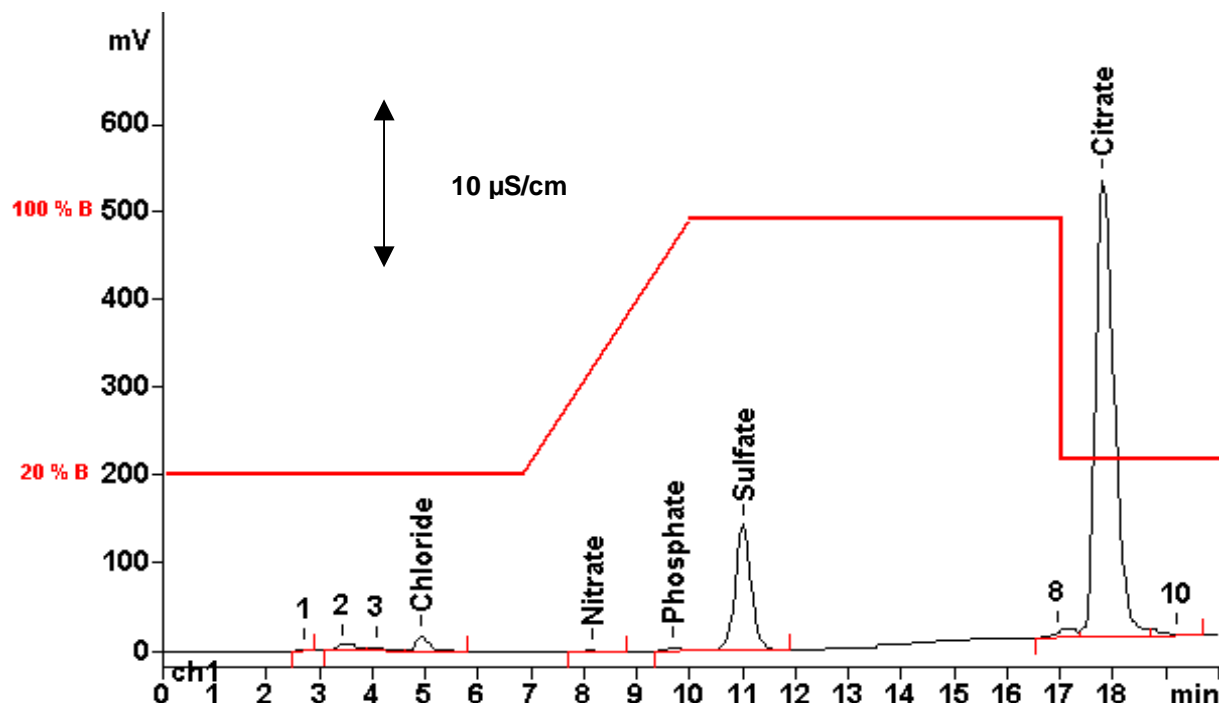
IC Application Note No. S-141

Title: Chloride, nitrate, phosphate, sulfate and citrate in beverages

Summary: Determination of chloride, nitrate, phosphate, sulfate and citrate in beverages using anion chromatography with a high-pressure gradient and conductivity detection after chemical suppression.

Sample: Grapefruit lemonade
Sample preparation: Dilution 1 : 20, injection after filtration

Column: 6.1006.510 Metrosep A SUPP 5-100
Eluent A: Ultrapure water
Eluent B: 3.5 mmol/L sodium hydrogencarbonate, 17.5 mmol/L sodium carbonate
Suppressor: 828 Dual Suppressor
Flow: 0.7 mL/min
Injection Volume: 20 μ L



Results:	Chloride mg/L	Nitrate mg/L	Phosphate mg/L	Sulfate mg/L	Citrate mg/L
	13.2	2.79	42.4	243	3659