

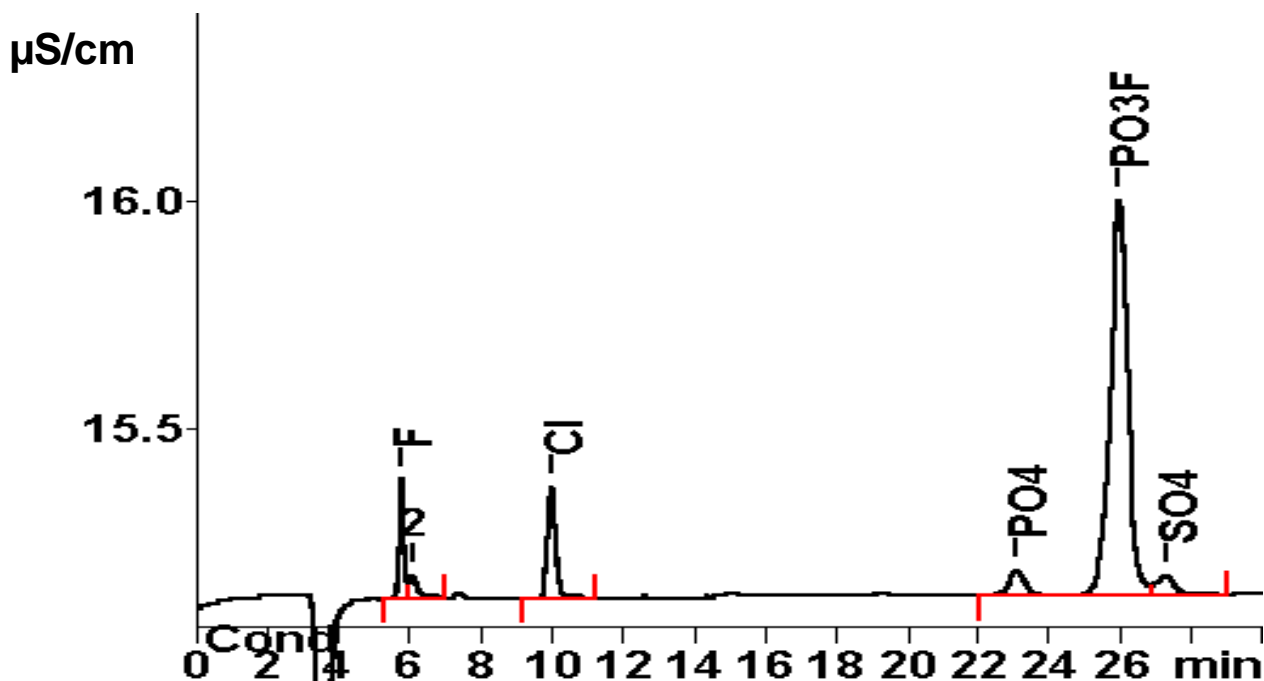
IC Application Note No. S-120

Title: Fluoride, chloride, phosphate, monofluorophosphate and sulfate in toothpaste

Summary: Determination of fluoride, chloride, phosphate, monofluorophosphate and sulfate in toothpaste using anion chromatography with conductivity detection after chemical suppression.

Sample: Toothpaste
Sample Preparation: 0.1 g of tooth paste dissolved in 100 mL ultrapure water, injection after filtration (0.45 µm)

Column: 6.1006.530 Metrosep A SUPP 5-250
Eluent: 1.0 mmol/L sodium hydrogencarbonate, 3.2 mmol/L sodium carbonate
Suppressor: MSM (50 mmol/L H₂SO₄)
Flow: 0.7 mL/min
Injection Volume: 20 µL



Results:	Fluoride mg/kg	Chloride mg/kg	Phosphate mg/kg	Fluorophosphate mg/kg	Sulfate mg/kg
	0.102	0.221	0.359	6.256	0.144