

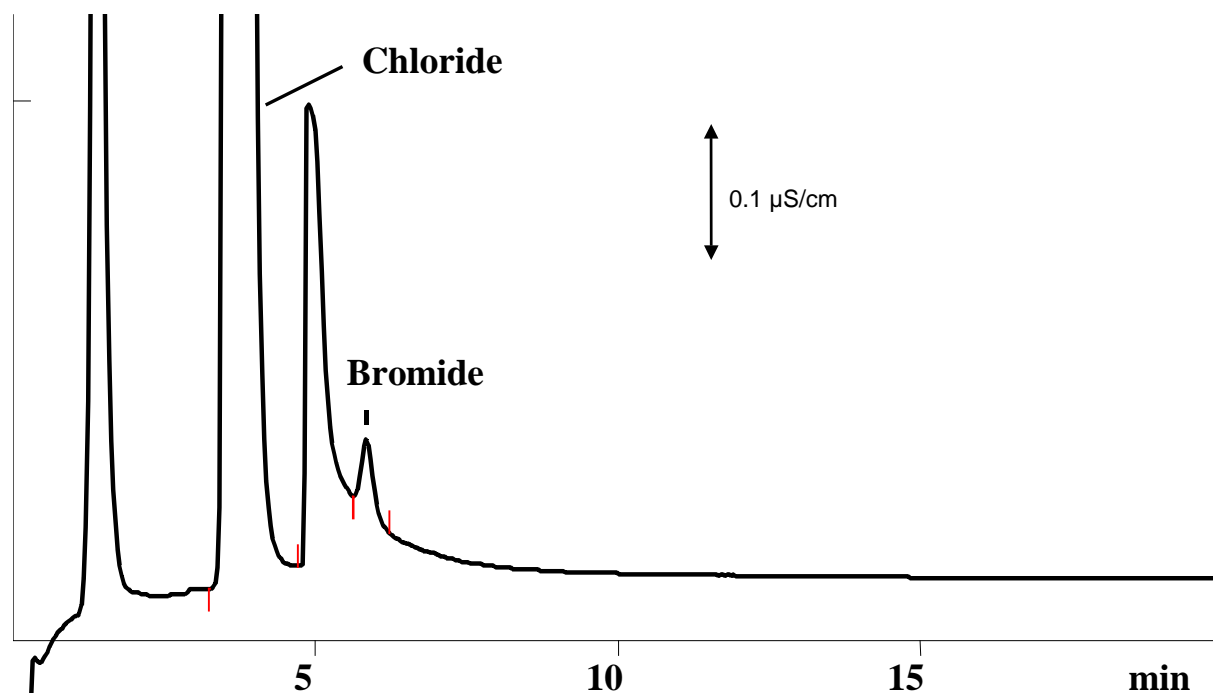
IC Application Note No. S-85

Title:	Bromide in NaCl crystal
---------------	--------------------------------

Summary:	Determination of bromide in NaCl crystal using anion chromatography with conductivity detection after chemical suppression.
-----------------	---

Sample:	NaCl crystal
Sample Preparation:	500 mg dissolved in 500 mL ultra pure water

Column:	6.1006.100 Metrosep Anion Dual 2
Eluent:	3.7 mmol/L sodium hydrogencarbonate, 1.7 mmol/L sodium carbonate, 9% acetone
Suppressor:	Metrohm Suppressor Module (MSM, 50 mmol/L H ₂ SO ₄)
Flow:	0.8 mL/min
Injection Volume:	20 µL



Results:	Bromide µg/g
	289

Full Scale change at 4.8 min.