

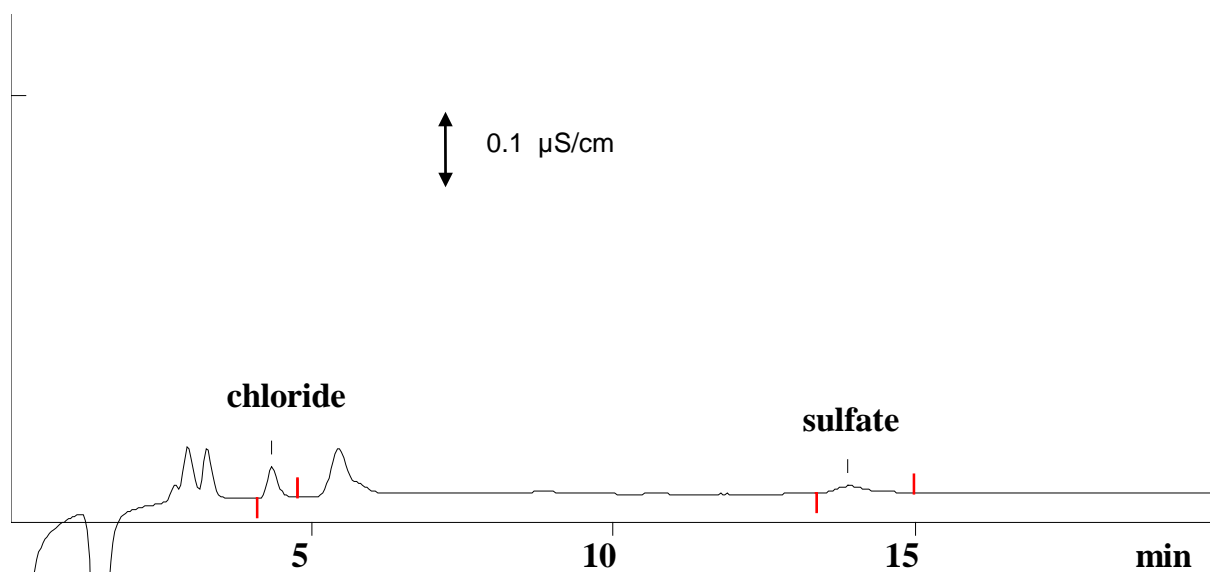
IC Application Note No. S-67

| | |
|---------------|--|
| Title: | Traces of chloride and sulfate in a developing bath |
|---------------|--|

| | |
|-----------------|---|
| Summary: | Determination of traces of chloride and sulfate in a developing bath using anion chromatography with conductivity detection after chemical suppression. |
|-----------------|---|

| | |
|----------------------------|---|
| Sample: | Developer bath (0.3% tetramethylammonium hydroxide) |
| Sample Preparation: | Direct injection after cation exchange |

| | |
|--------------------------|--|
| Column: | 6.1006.100 Metrosep Anion Dual 2 |
| Eluent: | 2.0 mmol/L sodium hydrogencarbonate, 1.3 mmol/L sodium carbonate |
| Suppressor: | Metrohm Suppressor Module (MSM, 50 mmol/L H ₂ SO ₄) |
| Flow: | 0.8 mL/min |
| Injection Volume: | 20 µL |



| Results: | Chloride µg/L | Sulfate µg/L |
|-----------------|------------------|-----------------|
| | 69 | 85 |