

# IC Application Note No. S-59

**Title:** Acetate, chloride, phosphate and succinate in an infusion solution

**Summary:** Determination of acetate, chloride, phosphate and succinate in an infusion solution using anion chromatography with conductivity detection after chemical suppression.

**Sample:** Infusion solution

**Sample Preparation:** Dilution 1 : 500

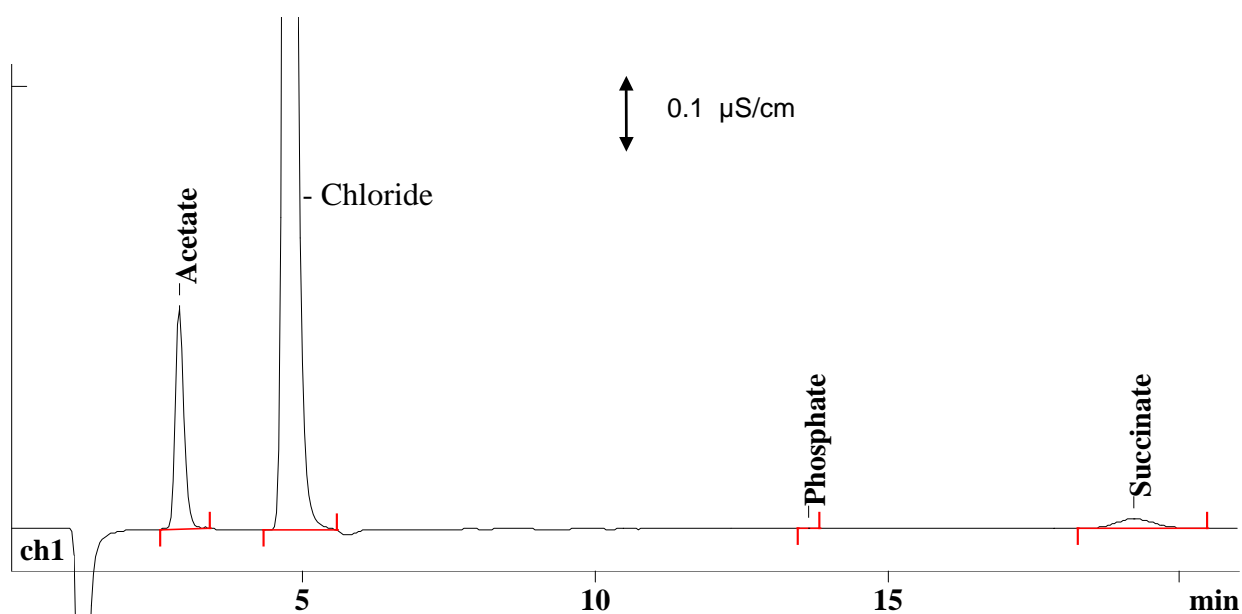
**Column:** 6.1006.100 Metrosep Anion Dual 2

**Eluent:** 2.0 mmol/L sodium hydrogencarbonate,  
1.3 mmol/L sodium carbonate

**Suppressor:** Metrohm Suppressor Module (MSM, 50 mmol/L H<sub>2</sub>SO<sub>4</sub>)

**Flow:** 0.8 mL/min

**Injection Volume:** 20 µL



<b>Results:</b>	Acetate g/L	Chloride g/L	Phosphate mg/L	Succinate g/L
	1.525	2.995	< 1	0.318