

# IC Application Note No. S-56

**Title:** Traces of chloride in ultra pure water under clean room conditions

**Summary:** Determination of traces of chloride in ultra pure water with direct injection under clean room conditions using anion chromatography with conductivity detection after chemical suppression.

**Sample:** Ultra pure water

**Sample Preparation:** Direct injection

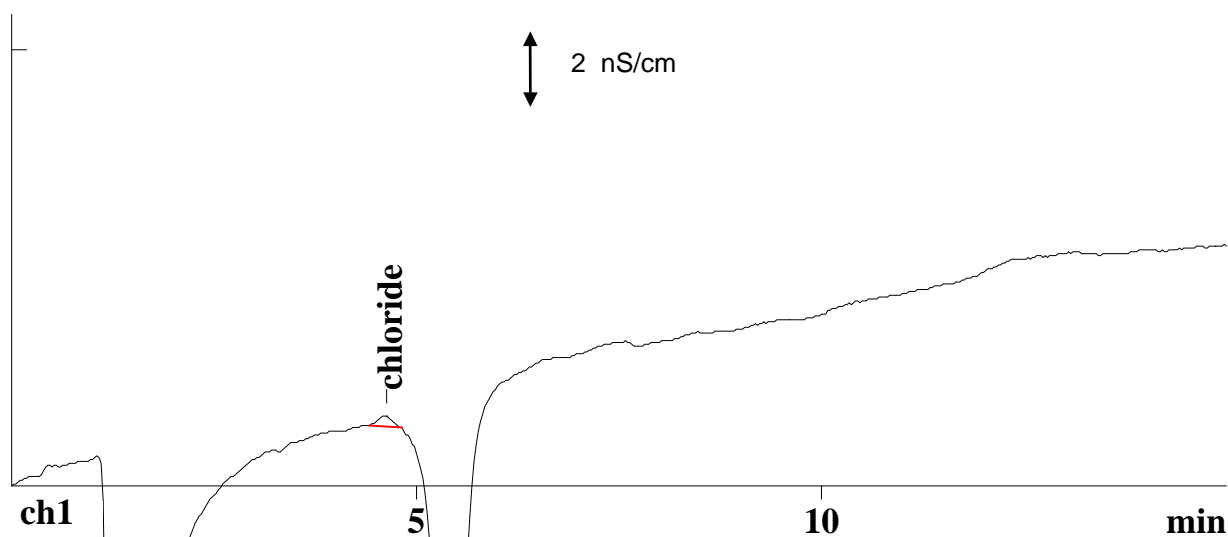
**Column:** 6.1006.100 Metrosep Anion Dual 2

**Eluent:** 2.0 mmol/L sodium hydrogencarbonate,  
1.3 mmol/L sodium carbonate

**Suppressor:** Metrohm Suppressor Module (MSM, 50 mmol/L H<sub>2</sub>SO<sub>4</sub>)

**Flow:** 0.8 mL/min

**Injection Volume:** 20  $\mu$ L



**Results:**

Chloride  
 $\mu$ g/L (ppb)

0.4