

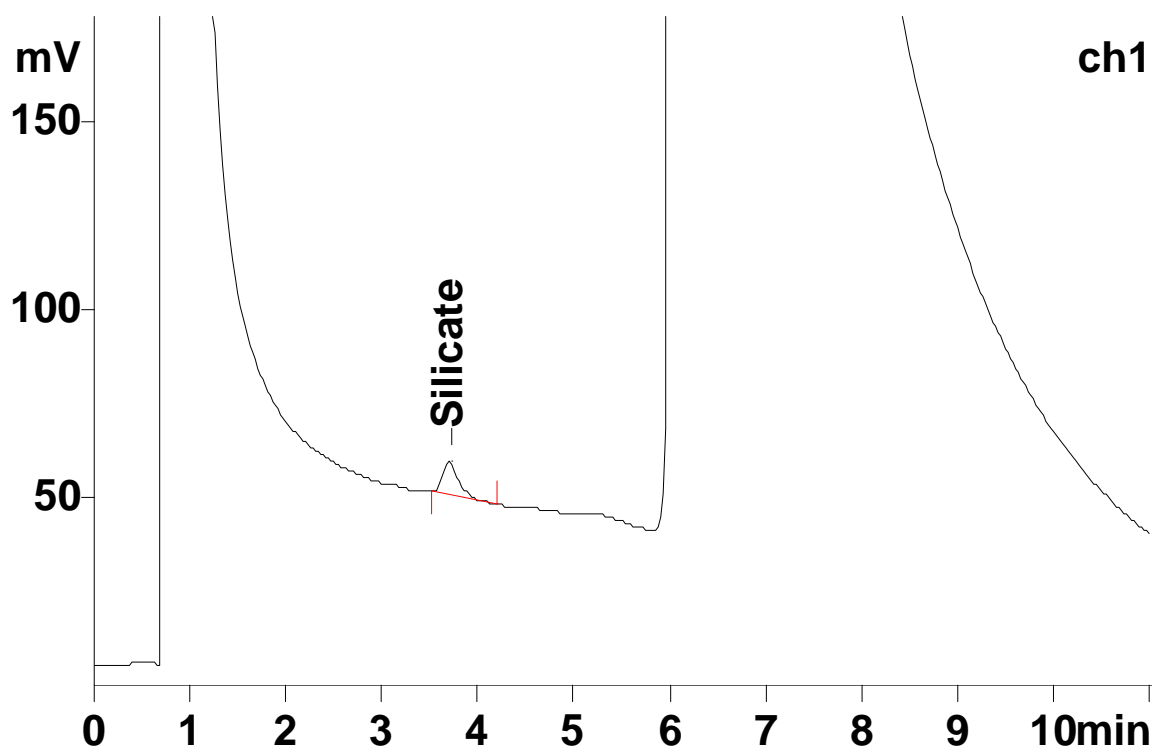
# IC Application Note No. Q-1

<b>Title:</b>	<b>Online monitoring of trace levels silicate in boiler feed water</b>
---------------	--

<b>Summary:</b>	Determination of trace levels of silicate in a boiler feed water using anion chromatography with direct conductivity detection.
-----------------	---

<b>Sample:</b>	Boiler feed water
<b>Sample Preparation:</b>	10 mL pre-concentrated (Metrosep A PCC, 6.1006.300)

<b>Column:</b>	6.1005.000 Hamilton PRP-X 100
<b>Eluent:</b>	3.2 mmol/L sodium hydroxide 0.5 mmol/L sodium carbonate
<b>Flow:</b>	2.0 mL/min
<b>Injection Volume:</b>	10 mL



<b>Results:</b>	Silicate µg/L
	<b>0.90</b>

See AN Q-2 for the determination of cations and AN Q-3 for the determination of anions in boiler feed water.