

IC Application Note No. N-10

Title: Chloride, Nitrate, Phosphate and Sulfate in Plant Leaf Extracts

Summary: Determination of chloride, nitrate, phosphate and sulfate in plant leaf extracts using anion chromatography with direct conductometric detection.

Sample: Plant leaf extracts

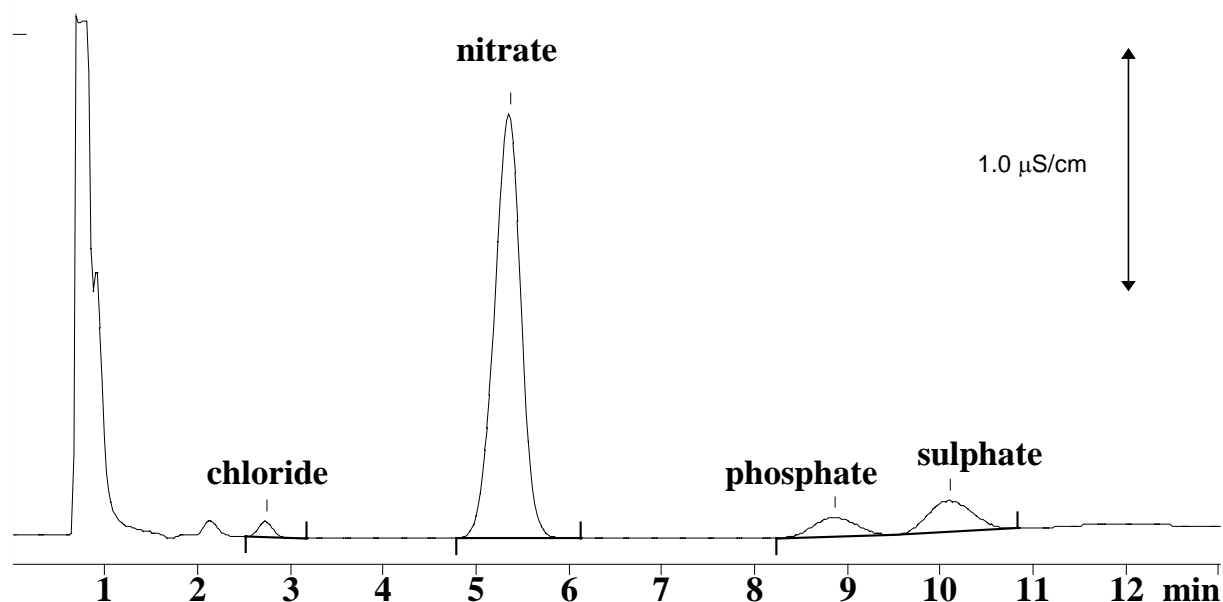
Sample Preparation: Extraction: 0.1 g sample in 5 mL water
dilution of extract 1:10

Column: 6.1009.000 SUPER-SEP Anion Column

Eluent: 1.5 mmol/L p-hydroxibenzoic acid, 5 % acetonitrile,
pH = 8.0 (Triethanolamine)

Flow: 1.5 mL/min

Injection Volume: 100 μ L



Results:	Cl ⁻	NO ₃ ⁻	HPO ₄ ²⁻	SO ₄ ²⁻
	μ g/g	μ g/g	μ g/g	μ g/g
	2.0	185.4	17.1	15.7