

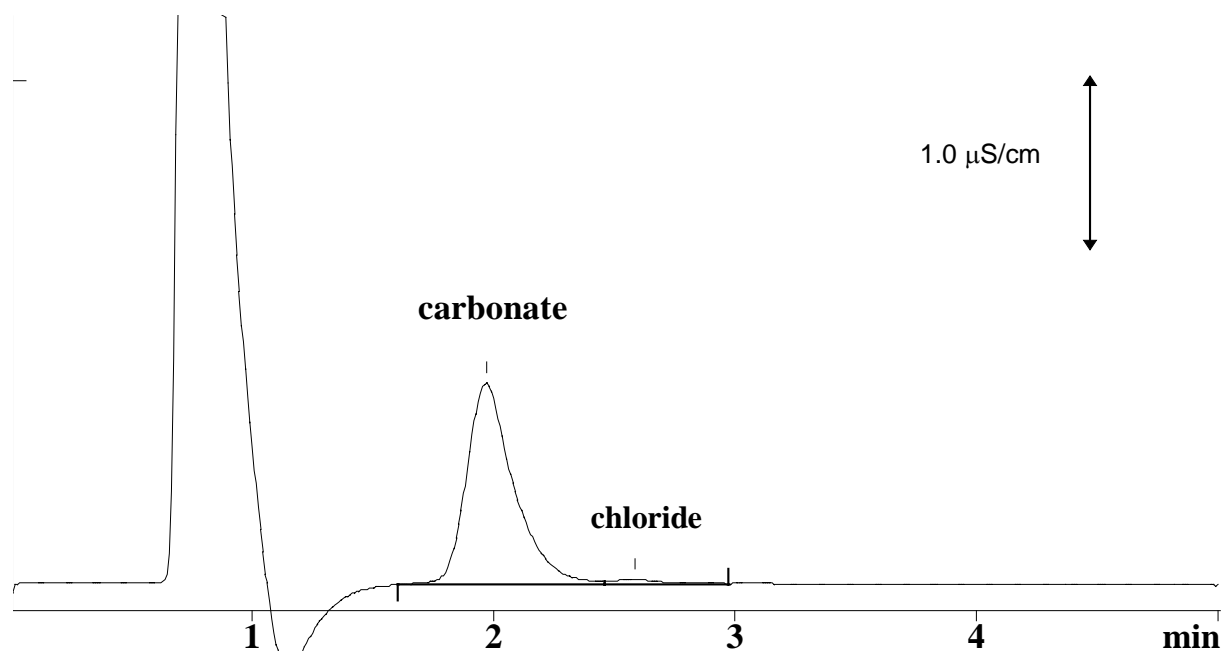
IC Application Note No. N-9

Title: Carbonate in amine solution

Summary: Determination of carbonate in a solution of methyl-monoethanol-amine with anion chromatography with direct conductivity detection.

Sample: Methyl-monoethanol-amine in water (3 - 4 %)
Sample Preparation: Dilution 1:1000

Column: 6.1009.000 SUPER-SEP Anion column
Eluent: 4.5 mmol/L boric acid, 13.5 mmol/L mannitol, 2.5 % acetonitrile, pH = 7.85 (TRIS)
Flow: 1.5 mL/min
Injection Volume: 100 μ L



Results:	carbonate mg/L	chloride
	9.0	not quantified