

IC Application Note No. C-30

Title: Four cations in soy drink (chocolate) using Dialysis as Sample Preparation

Summary: Determination of sodium, potassium, calcium and magnesium in soy drink (chocolate) using cation chromatography with direct conductivity detection and dialysis as sample preparation.

Sample: Soy drink (chocolate)

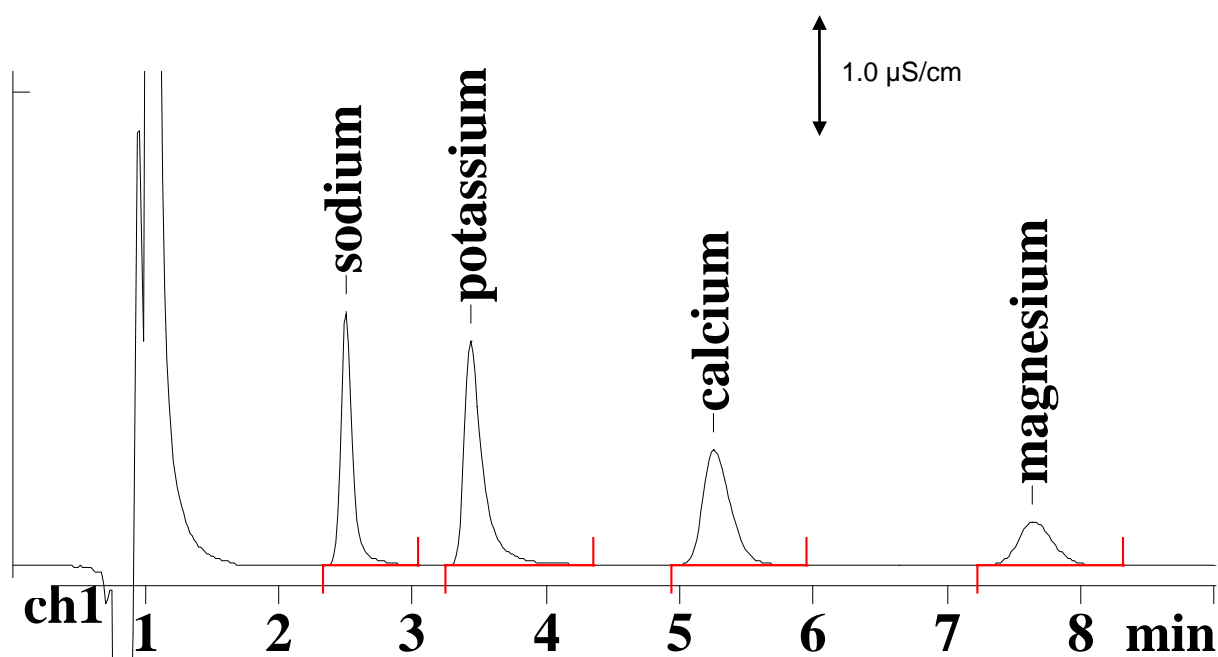
Sample Preparation: 10 mL/1000 mL of 1 mmol/L HNO₃, injection using 754 Dialysis Unit (acceptor solution: 1 mmol/L HNO₃)

Column: 6.1010.000 Metrosep Cation 1-2

Eluent: 4 mmol/L tartaric acid, 1 mmol/L dipicolinic acid

Flow: 1.0 mL/min

Injection Volume: 20 µL after dialysis



Results:	Na ⁺ mg/L	K ⁺ mg/L	Ca ²⁺ mg/L	Mg ²⁺ mg/L
	554	1581	752	170