

Application Bulletin 393

Installation Instruction for ProfIC Vario 15 Cation

ProfIC Vario 15 Cation is a Professional IC Vario system for the fully automatic determination of non-suppressed cations or anions with the **Metrohm intelligent Partial Loop Technique (MiPT)**. «Partial Loop Injection» allows samples in mg/L to µg/L range to be injected without previous dilution as well as multipoint calibrations using just one standard solution. «ProfIC Vario 15» safely masters all routine tasks in ion chromatography. It is simple to use and extremely reliable.

For the installation instructions for suppressed systems, please check AB-392.



Table of contents

1.	Delivery Package	2
	IC	2
	Detector	2
	Accessories	2
	Sample processor.....	2
	Optional	2
2.	Installation.....	2
2.1.	Installation of the software	2
2.2.	Accessory Kit Vario/Flex Basic (6.5000.000)	2
2.3.	Accessory Kit: Vario/Flex ONE (6.5000.010)	2
2.4.	858 Professional Sample Processor	2
2.4.1.	Liquid Handling Station	3
2.4.2.	800 Dosino.....	3
2.5.	Interconnection of devices	3
2.6.	940 Professional IC Vario	3
3.	MagIC Net.....	4
3.1.	Configuration.....	4
3.2.	Method adjustment	4
3.3.	Purge of the system	5
3.4.	User defined determination	5
4.	Exemplary measurement	6
5.	Optional equipment.....	7
	Eluent Production Module.....	7

1. Delivery Package

Delivered with ProfIC Vario 15 Cation package:

Nr	Article no.	Article designation
IC		
1	2.940.1100	940 Professional IC Vario ONE
Detector		
1	2.850.9010	IC Conductivity Detector
Accessories		
1	2.800.0010	800 Dosino
1	6.5330.180	IC Equipment: MiPT
Sample processor		
1	2.858.0010	858 Professional Sample Processor
Optional		
1	6.6059.302	MagIC Net 3.0 Professional CD - 1 License
1	6.6059.303	MagIC Net 3.0 Multi - 3 licenses
1	6.2041.440	Sample rack 148 x 11 mL + 3 x 300 mL
1	6.2041.760	Sample rack 54 x 11 mL + 1 x 300 mL
1	6.2743.040	Sample tubes 2.5 mL
1	6.2743.050	Sample tubes 11 mL
1	6.2743.070	Stopper with perforation
1	6.1050.420	Metrosep C 4 - 150/4.0
1	6.1050.500	Metrosep C 4 Guard/4.0
1	2.941.0010	941 Eluent Production Module
1	6.2769.110	Sensor empty 2 L

2. Installation

Following is a detailed description of how to install ProfIC Vario 15 Cation.

We strongly recommend that the individual steps are carried out in the order given below.

2.1. Installation of the software

All programs must be shut down first. Make sure no Metrohm instrument is connected to the PC. Install MagIC Net with the help of the MagIC Net - CD. The Microsoft Installation Wizard is accepted and executed. All the standard directories proposed by the program should be accepted. Restart windows.

Now as soon as you connect a new Metrohm instrument via USB connection to the PC, the driver is installed and a window will pop up in MagIC Net, asking you if you'd like to

store this device in your configuration. If you do, please answer with yes. The names will be checked later in this installation instruction.

2.2. Accessory Kit: Vario/Flex Basic (6.5000.000)

Using the Accessory Kit Vario/Flex Basic, install the Professional IC Vario. Remove handle, place the detector block in the instrument and connect the detector cable, remove the transport locking screws, connect the leak sensor cable and connect the drainage tubing.

Then please mount the holder for Dosinos (6.2057.210) on the IC by removing the bottle holder on top of the instrument, placing the Dosino holder on the side of the IC and remounting the bottle holder on top.

In continuation, set up the waste collector by assembling the cap and screwing it onto the vessel. Then hang the waste collector holder on the side of the IC, so you can observe the droplets coming out of the capillaries later connected to the collector. Attach the waste tube to the vessel and lead it to the waste canister. When the tube is too long, please shorten it, because it is important to have a high level difference for the liquid to drain.

The power cable and USB cable (6.2151.020) are plugged into the rear of the Professional IC Vario. Please don't switch on the instrument yet. This step will follow after the completed installation.

2.3. Accessory Kit: Vario/Flex ONE (6.5000.010)

In the box with the Accessory Kits ONE, you will find all the accessories for setting up the eluent bottle. Please lead the aspiration tube for the eluent through the M8 stopper, the earring and the eluent cap. Then fix the white weight (6.2744.210), the adaptor (6.2744.210) and the aspiration filter (6.2821.090) on the eluent aspiration tube, all the while being careful not to touch the filter and its connections with bare hands in order to avoid cross contamination. Also fix the filled adsorber tube on the eluent cap. Please refer to the 940 Professional IC Vario manual for a stepwise description.

2.4. 858 Professional Sample Processor

For a detailed description, please refer to the 858 Professional Sample Processor manual. In general, you will have to do the following: Plug in the Swing Head connection cable and the power supply cable. The controller cable (6.2151.000) is plugged into the plug "Contr." on the 858 and connected to the IC device via USB. The sample processor initializes and lifts its Swing Head, once the IC device it is connected to is recognized by the software. For this, you have to plug the USB cable of the IC into the PC and turn it on. Afterwards, it is possible to mount the retaining plate, the needle and the safety shield (for detailed instructions please refer to the 858 Professional Sample Processor manual).

For the following installations, please shut down the IC again and disconnect the 858 from the power supply.

2.4.1. Liquid Handling Station

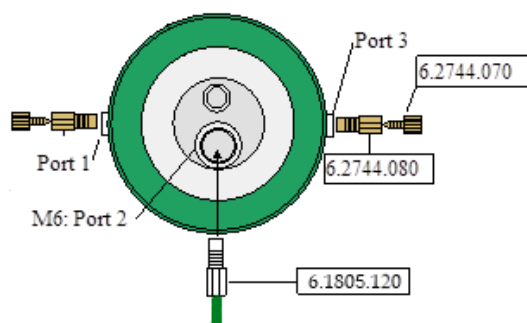
The Liquid Handling Station is mounted onto the left side of the Sample Processor. For installation instructions, please refer to the Liquid Handling Station manual. All parts are included in the IC Equipment: MiPT (6.5330.180). Please make sure that the Liquid Handling Station (LQH Station) is aligned properly before continuing the setup. All angle settings will be configured in a later step.

For this application, a stopper is used to close the outlet of the inner compartment of the rinsing area. The waste tubing is fixed at the bottom of the rinsing station to drain the waste water.

2.4.2. 800 Dosino

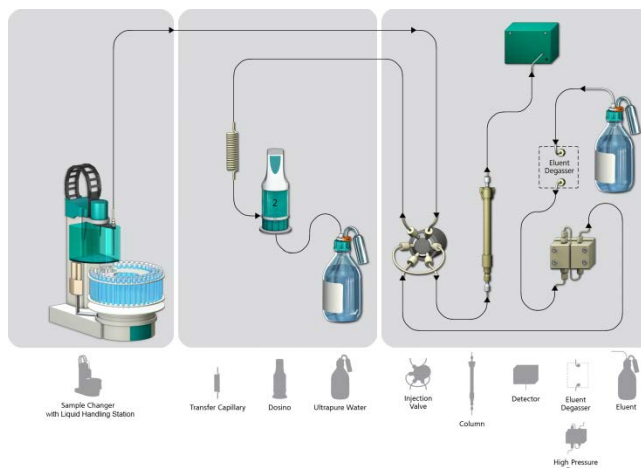
Please fix the Dosino on the Dosino holder on the IC and plug it into the MSB1 at the rear side of the 858 Professional Sample Processor. The 858 must be switched off!

At port 3, please connect the 2 mL cation transfer capillary (6.1841.000), with the help of the M6 thread (6.2744.080). Port 2 is used for ultrapure water supply; therefore please insert the FEP aspiration tubing (6.1819.110) through the M6 hole in the bottle cap (6.1602.160) of the 2 L bottle included in the IC Equipment: MiPT set, following this step, connect the Port 2 of the Dosino with the M6 hole in the bottle cap of the 2 L water bottle using the FEP tube connection (6.1805.120). Please also make sure to close the M8 hole with its closer and to fix the adsorber tube (6.1619.000) and its adapter (6.1624.000) in the right place.



2.5. Interconnection of devices

The whole setup of Sample Processor, Dosino and the IC device is depicted in the following scheme.



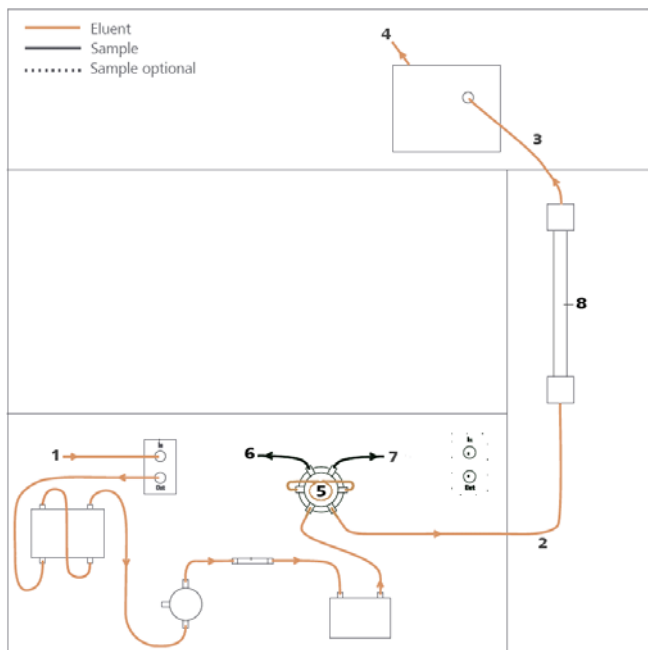
Prepare and degas an eluent suitable for column you want to use (see column manual). For Metrosep C 4 - 150/4.0 a solution of 1.7 mmol/L HNO₃ / 0.7 mmol/L dipicolinic acid (DPA, 2,6-Pyridinedicarboxylic acid) is adequate.

Ultrapure water is filled into the 2 L bottle at the Dosino to serve as rinsing solution for the whole sample pathway.

2.6. 940 Professional IC Vario

Capillaries are connected according to the following list and the diagram below:

1. Connection to the Eluent bottle for cation determination
2. Capillary to cation separation column
3. Capillary from cation separation column to cation detector
4. Detector outlet capillary, connected to the waste collector
5. 250 µL loop (6.1825.290) connected to the valve positions 3 and 6
6. 2 mL transfer capillary (6.1841.000) connection from the cation valve position 2 to port 3 of the Dosino
7. 150 cm PEEK capillary (i.D. 0.5 mm) connection from needle on the sample processor to the valve position 1
8. The UNF 10/32 coupling (6.2744.040) is installed instead of the column to rinse the system with eluent. After rinsing the column will be installed.



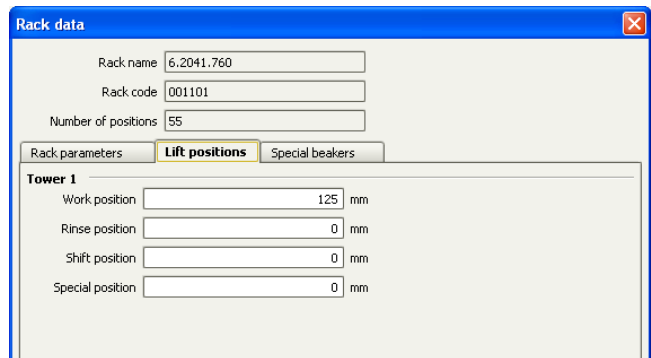
3. MagIC Net

3.1. Configuration

Now please connect the USB cables from the instruments and turn their power on. Connected USB devices are automatically recognized when MagIC Net is started. After confirmation of the automatically generated requests, the devices and columns are stored in the configuration. The devices are predefined as "940 Professional IC Vario 1" and "858 Professional Sample Processor 1". Name them accordingly, if other names appear in your configuration (e.g. due to changed setting on your computer). The Dosino connected to the 858 Professional Sample Processor should be labeled as "LH Dosino" (at MSB1).

In the window configuration, the 940 Professional IC Vario, the 858 Professional Sample Processor, the 800 Dosino, and the column Metrosep C 4 - 150/4.0 are visible. Add and define the eluent.

The settings for the rack require a "work position" fitting to the respective rack (e.g. 125 mm for rack 6.2041.760).



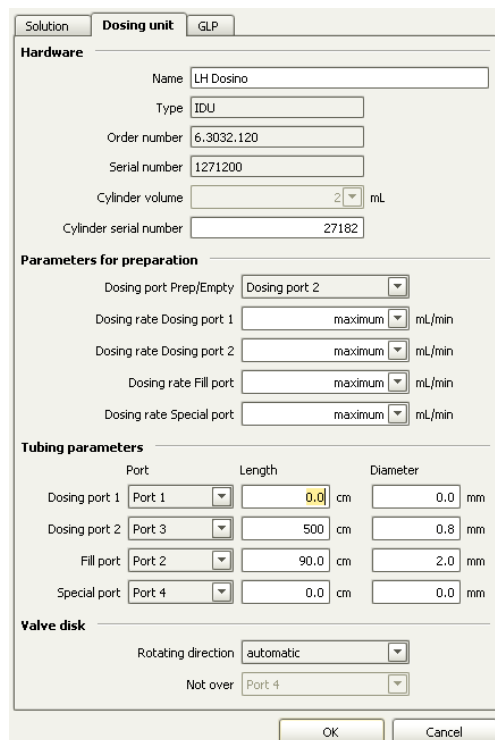
In order to configure the settings of the Liquid Handling Station, two external needle positions have to be defined for

the tower of the Sample Processor in the window configuration. At the "external position 1" the needle should be in the inner compartment which corresponds to an angle of approximately 106° and a work position of 125 mm. The exact angle depends on your installation. In this position, the needle is rinsed from the in- and outside.

For the outer compartment, an external position 2 is defined with an angle of ~109.5° and a work position of 50 mm. The external position 2 is used as drain position (e.g. to expel sample directly to the waste).

Be aware that the angles written above are only guidelines, for each installation the best position has to be determined with the help of the manual control window. Be sure to save the correct angles in the configuration.

In the sub window "Solutions" of the configuration, adjust the settings of the Dosino solution "LH Dosino" to 100% Ultrapure Water and in the Dosing unit subfolder adjust the parameters according to the following image:



3.2. Method adjustment

The method for this configuration can be found in the example method folder on your MagIC Net - CD. In the window method manager, import the method for ProfIC Vario 15 Cation from the installation CD: Go to File → method manager and choose your method group. Afterwards, click on edit → import and choose the pathway on the installation CD:

MagICnet\examples\methods\ ProfIC Vario \ProfIC Vario_15_Cation.imet.

In the window method, open the ProfIC Vario 15 Cation method and assign the following equipment: Define the rack of the connected sample processor, assign the eluent to the IC pump, and assign the column Metrosep C 4 - 150/4.0 to the analysis and define the Dosino solution (LH Dosino). Adjust the temperature of the column oven to 30°C.

Perform a method test and save the method.

3.3. Purge of the system

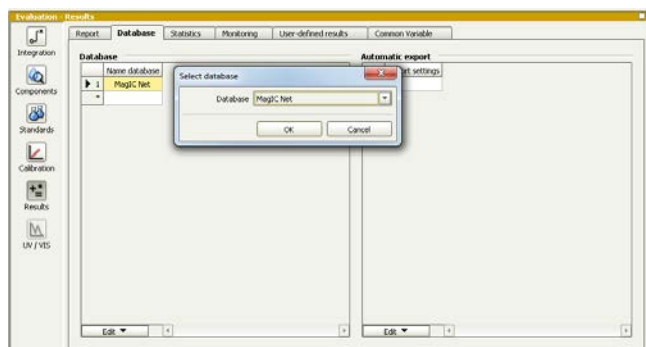
Before inserting the column, flush the system for about 10 minutes and get rid of air bubbles (by using the purge valve and syringe).

Now insert and rinse the precolumn for 10 minutes by leading the outlet directly into the waste. Afterwards connect the analytical column and flush them likewise for 10 minutes. Only afterward the column is completely connected to the flow path of the eluent (see also 940 manual). Please move the Dosino into the external position 2 for pre-rinsing. The Dosino and the buffer tube can be rinsed by using the “prepare” button (under manual control). In order to start the equilibration, go to the window work place, load the cation method, and press “Start HW”.

Equilibrate the system until the baseline is stable.

3.4. User defined determination

In the window method, under evaluation, enter the concentrations of the required standards. With the method ProfIC Vario_15_Cation, only one standard is needed for calibration. The standard with the lowest concentration (standard 1) has to be prepared in this method (meant for mg/L analyte concentrations). All other standards have to be a multiple of standard 1, e.g. all components of standard 2 have twice the concentration as those in standard 1. Now please add the correct Database in the Evaluation window (Evaluation - Results - Database) for the method.



For trace analysis, it is recommended to prepare the highest standard, as this one is more stable. If a trace setup is

wished, the formula in the subprogram Standard, LH Dosino, Dosing needs to be changed from:

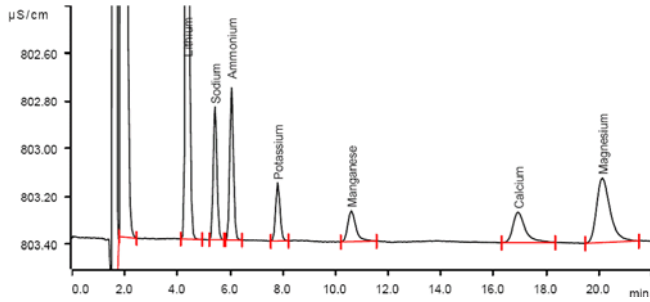
'SD.VOLUME' /1000 * 'SD.TYPEVALUE' to 'SD.VOLUME' /1000 / 'SD.TYPEVALUE' in the method.

In the window work place, setup up the “determination series”, describing your samples by ident, vial number, sample type (standard, blank, or sample etc.). The volumes to be injected can vary from 4-200 µL, but for Standards, please always enter the volume of 4 µL (200 µL for trace analysis).

For evaluation and after recording the first chromatogram, check the retention times of your compounds. Since they depend on the performance of your column, you may have to adjust them in your method.

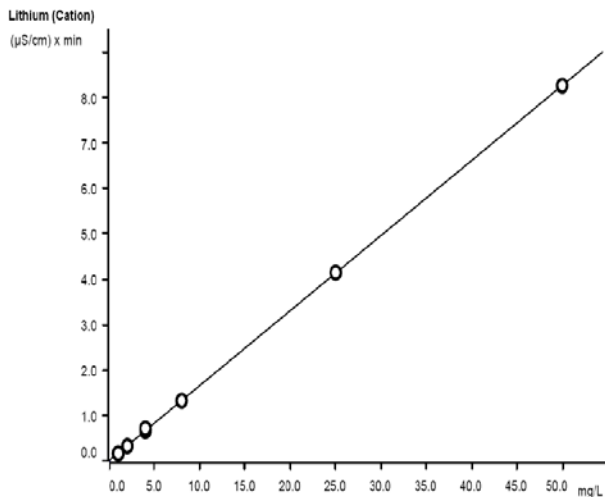
4. Exemplary measurement

An exemplary measurement was performed, including the cations lithium, sodium, ammonium, potassium, manganese, calcium, and magnesium (8 µL injected, 2 mg/L of each component). The sample for measurement is acidified by 100 µL nitric acid (2 mol/L) per 100 mL. The following chromatogram was recorded a C 4 - 150/4.0



For the calibration, the average peak areas of 2 injections were evaluated. Within the concentration range of 1 - 50 mg/L (6 levels), a linear curve type was used for evaluation. Correlation coefficients and standard deviations are listed in the following table. The calibration curve for lithium is shown as example.

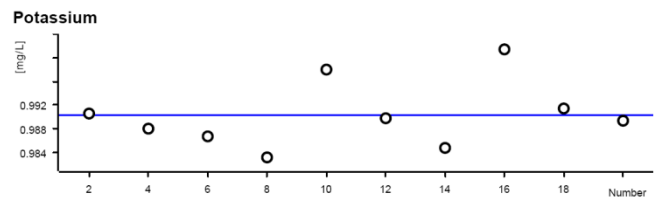
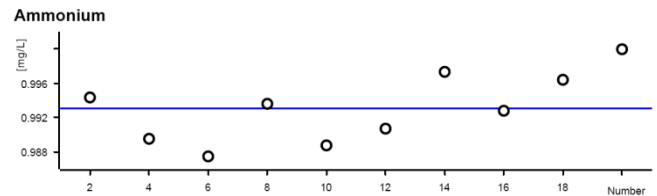
	Correlation coefficient	Percentage standard deviation [%]
Lithium	0.999995	0.460
Ammonium	0.999999	0.204
Potassium	0.999999	0.212
Manganese	0.999999	0.181
Calcium	0.999980	0.914
Magnesium	0.999956	1.386



Function:	$A = 6.62584E-3 + 0.0413135 \times Q$
Relative standard deviation	0.460%
Correlation coefficient	0.999995
Curve type	Linear
Weighting	1

The precision of 10 injections of 1 mg/L standard ions was determined. The results are listed in the following table and exemplary trend chart is shown for ammonium and potassium.

Ion	Mean value [mg/L]	Standard deviation	
		relative [%]	absolute [mg/L]
Lithium	0.976	0.205	0.002
Ammonium	0.992	0.403	0.004
Potassium	0.993	0.403	0.004
Manganese	0.990	0.606	0.006
Calcium	1.017	1.377	0.014
Magnesium	1.035	2.415	0.025



5. Optional equipment

Eluent Production Module

The 941 Eluent Production Module creates fresh new eluent out of eluent concentrate and ultrapure water. For installation instructions and further information, please refer to the 941 Eluent Production Module Manual.